

Anti-RFP antibody {DyLight®633} (STJ140210)

STJ140210

GENERAL INFORMATION

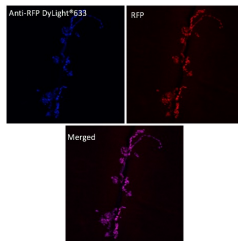
| | |
|--------------------------|---|
| Product Type | Primary antibodies |
| Short Description | Goat polyclonal antibody anti-RFP is suitable for use in Western Blot, Immunofluorescence and Immunohistochemistry research applications. |
| Applications | WB, IF, IHC-F |
| Host/Source | Goat |
| Reactivity | RFP, mCherry, mOrange, mPlum, mRFP, mStrawberry, tdTomato |

PRODUCT PROPERTIES

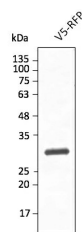
| | |
|----------------------------|--|
| Clonality | Polyclonal |
| Clone ID | |
| Concentration | 2.5 mg/mL |
| Conjugation | DyLight®633 |
| Purification | Epitope affinity purified |
| Dilution Range | WB: 1:500-1:2000 IF: 1:50-1:500 IHC-F: 1:50-1:1000 |
| Formulation | PBS, 20% glycerol and 0.05% sodium azide |
| Isotype | IgG |
| Storage Instruction | For continuous use, store at 2-8 C for one-two days. For extended storage, store in -20 C freezer. Working dilution samples should be discarded if not used within 12 hours. |

TARGET INFORMATION

| | |
|---------------------------|--|
| Gene ID | |
| Gene Symbol | |
| Uniprot ID | |
| Immunogen | Purified recombinant RFP peptide produced in E. coli. |
| Immunogen Region | |
| Specificity | In 293HEK cells transfected with cds plasmid detects a band of 29 kDa by Western blot. This antibody also recognizes very well tdTomato and does not cross-react to GFP (green fluorescent protein). |
| Immunogen Sequence | |



Immunofluorescence in *Drosophila* larvae NMJ expressing RFP in neurons (DyLightRFP), muscle 6/7 using anti-RFP conjugated to DyLight®633 at 1/500



Anti-RFP antibody conjugated to DyLight® 633 at 1/2, 500 dilution using HEK293 transfected cell lysates at 50 µg per lane

This product is suitable for in-vitro studies under the RESEARCH USE ONLY [RUO] licence. This product must not be used as for diagnostic or other medical purposes.
St John's Laboratory Ltd, Knowledge Dock Business Centre, University Way, London, E16 2RD | Tel: 0208 223 3081