

## Anti-RFP antibody {DyLight®550} (STJ140209)

STJ140209

### GENERAL INFORMATION

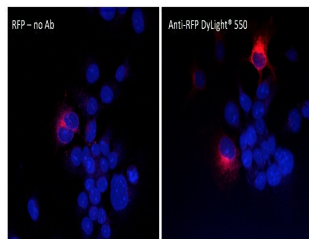
<b>Product Type</b>	Primary antibodies
<b>Short Description</b>	Goat polyclonal antibody anti-RFP is suitable for use in Western Blot, Immunofluorescence and Immunohistochemistry research applications.
<b>Applications</b>	WB, IF, IHC-F
<b>Host/Source</b>	Goat
<b>Reactivity</b>	RFP, mCherry, mOrange, mPlum, mRFP, mStrawberry, tdTomato

### PRODUCT PROPERTIES

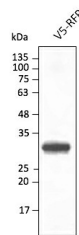
<b>Clonality</b>	Polyclonal
<b>Clone ID</b>	
<b>Concentration</b>	2.5 mg/mL
<b>Conjugation</b>	DyLight®550
<b>Purification</b>	Epitope affinity purified
<b>Dilution Range</b>	WB: 1:500-1:2000 IF: 1:50-1:500 IHC-F: 1:50-1:1000
<b>Formulation</b>	PBS, 20% glycerol and 0.05% sodium azide
<b>Isotype</b>	IgG
<b>Storage</b>	For continuous use, store at 2-8 C for one-two days. For extended storage, store in -20 C freezer. Working dilution samples should be discarded if not used within 12 hours.
<b>Instruction</b>	

### TARGET INFORMATION

<b>Gene ID</b>	
<b>Gene Symbol</b>	
<b>Uniprot ID</b>	
<b>Immunogen</b>	Purified recombinant RFP peptide produced in E. coli.
<b>Immunogen Region</b>	
<b>Specificity</b>	In 293HEK cells transfected with cds plasmid detects a band of 29 kDa by Western blot. This antibody also recognizes very well tdTomato and does not cross-react to GFP (green fluorescent protein).
<b>Immunogen Sequence</b>	



Immunofluorescence - anti-RFP antibody conjugated to DyLight® 550 using COS-7 cells transfected with GFP-Rab5a (signal amplification); cells were fixed with methanol and anti-RFP at 1/250



Anti-RFP antibody conjugated to DyLight® 550 at 1/2, 500 dilution using HEK293 transfected cell lysates at 50 µg per lane

This product is suitable for in-vitro studies under the RESEARCH USE ONLY [RUO] licence. This product must not be used as for diagnostic or other medical purposes.  
St John's Laboratory Ltd, Knowledge Dock Business Centre, University Way, London, E16 2RD | Tel: 0208 223 3081