

Anti-BCL2 antibody (143 aa N-Term) (STJ140179)

STJ140179

GENERAL INFORMATION

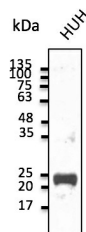
Product Type	Primary antibodies
Short Description	Goat polyclonal antibody anti-BCL2 (143 aa N-Term) is suitable for use in Western Blot research applications.
Applications	WB
Host/Source	Goat
Reactivity	Human, Rat, Mouse, Canine, Monkey

PRODUCT PROPERTIES

Clonality	Polyclonal
Clone ID	
Concentration	3 mg/mL
Conjugation	Unconjugated
Purification	Epitope affinity purified
Dilution Range	WB:1:500-1:2000
Formulation	PBS, 20% glycerol and 0.05% sodium azide
Isotype	IgG
Storage	For continuous use, store at 2-8 C for one-two days. For extended storage, store in -20 C freezer. Working dilution samples should be discarded if not used within 12 hours.
Instruction	

TARGET INFORMATION

Gene ID	596
Gene Symbol	BCL2
Uniprot ID	BCL2_HUMAN
Immunogen	Recombinant affinity purified peptide derived from within residues 143 aa to the N-terminus of human BCL2 produced in E. coli.
Immunogen Region	143 aa N-Term
Specificity	Detects a band of approximately 25 kDa by Western blot in the following cell lysate: LS174T, Jurkat and HUH.
Immunogen Sequence	



Anti-BCL2 antibody at 1:1,000 dilution; 50 µg of total protein per lane; rabbit polyclonal to goat IgG (HRP) at 1:10,000 dilution

This product is suitable for in-vitro studies under the RESEARCH USE ONLY [RUO] licence. This product must not be used as for diagnostic or other medical purposes.
 St John's Laboratory Ltd, Knowledge Dock Business Centre, University Way, London, E16 2RD | Tel: 0208 223 3081