

## Anti-SNCB antibody (80 aa C-Term) (STJ140169)

STJ140169

### GENERAL INFORMATION

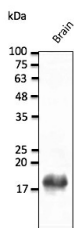
<b>Product Type</b>	Primary antibodies
<b>Short Description</b>	Goat polyclonal antibody anti-SNCB (80 aa C-Term) is suitable for use in Western Blot research applications.
<b>Applications</b>	WB
<b>Host/Source</b>	Goat
<b>Reactivity</b>	Human, Rat, Mouse, Canine, Monkey

### PRODUCT PROPERTIES

<b>Clonality</b>	Polyclonal
<b>Clone ID</b>	
<b>Concentration</b>	2 mg/mL
<b>Conjugation</b>	Unconjugated
<b>Purification</b>	Epitope affinity purified
<b>Dilution Range</b>	WB:1:500-1:5000
<b>Formulation</b>	PBS, 20% glycerol and 0.05% sodium azide
<b>Isotype</b>	IgG
<b>Storage</b>	For continuous use, store at 2-8 C for one-two days. For extended storage, store in -20 C freezer. Working dilution samples should be discarded if not used within 12 hours.
<b>Instruction</b>	

### TARGET INFORMATION

<b>Gene ID</b>	6620
<b>Gene Symbol</b>	SNCB
<b>Uniprot ID</b>	SYUB_HUMAN
<b>Immunogen</b>	Recombinant peptide derived from within residues 80 aa to the C-terminus of human SNCB produced in E. coli.
<b>Immunogen Region</b>	80 aa C-Term
<b>Specificity</b>	Detects endogenous levels of SNCB by Western blot. This Ab is specific for SNCB and does not recognizes SNCA and SNCG proteins.
<b>Immunogen Sequence</b>	



Anti-SNCB antibody at 1:1000 dilution; mouse brain lysate at 50 µg per lane; chicken polyclonal to goat IgG (HRP) at 1:10000 dilution.