

Anti-OCLN antibody (500aa C-Term) (STJ140166)

STJ140166

GENERAL INFORMATION

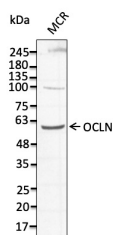
Product Type	Primary antibodies
Short Description	Goat polyclonal antibody anti-Occludin (500aa C-Term) is suitable for use in Western Blot, Immunohistochemistry and Immunohistochemistry research applications.
Applications	WB, IHC-F, IHC-P
Host/Source	Goat
Reactivity	Human, Rat, Mouse, Monkey, Canine

PRODUCT PROPERTIES

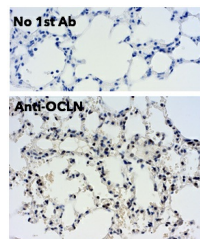
Clonality	Polyclonal
Clone ID	
Concentration	3 mg/mL
Conjugation	Unconjugated
Purification	This antibody is epitope-affinity purified from goat antiserum.
Dilution Range	WB 1:500-1:2000 IHC-F 1:250-1:1000 IHC-P 1:250-1:1000
Formulation	PBS, 20% glycerol and 0.05% sodium azide.
Isotype	IgG
Storage	For continuous use, store at 2-8 C for one-two days. For extended storage, store in -20 C freezer. Working dilution samples should be discarded if not used within 12 hours.
Instruction	

TARGET INFORMATION

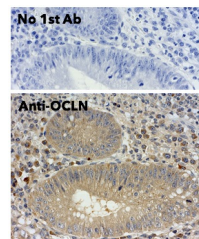
Gene ID	100506658
Gene Symbol	OCLN
Uniprot ID	OCLN_HUMAN
Immunogen	Peptide derived from within residues 500 aa to the C-terminus of human Occludin.
Immunogen Region	500aa C-Term
Specificity	Detects endogenous levels of OCLN in MCR, IMCD3, COS7, MDCK, HUH, HEK293, MCF7, mouse brain by Western blot.
Immunogen Sequence	



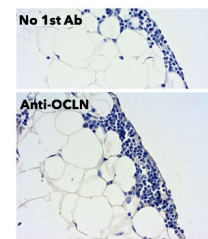
Anti-OCLN antibody at 1:1000 dilution lysates at 50 µg per lane rabbit polyclonal goat IgG (HRP) at 1:10000 dilution



Immunohistochemistry of mouse lung using anti-OCLN antibody and FFPE tissue after heat-induced antigen retrieval. Anti-OCLN antibody at 1:500:DAB detection.



Immunohistochemistry of human appendix using anti-OCLN antibody and FFPE tissue after heat-induced antigen retrieval. Anti-OCLN antibody at 1:500:DAB detection.



Immunohistochemistry of rat adipose tissue using anti-OCLN antibody and FFPE tissue after heat-induced antigen retrieval. Anti-OCLN antibody at 1:500:DAB detection.