

Anti-QPELAPEDPED-Tag antibody (STJ140165)

STJ140165

GENERAL INFORMATION

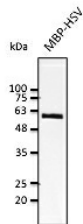
Product Type	Primary antibodies
Short Description	Goat polyclonal antibody anti-QPELAPEDPED-Tag is suitable for use in Western Blot research applications.
Applications	WB
Host/Source	Goat
Reactivity	Transfected cells

PRODUCT PROPERTIES

Clonality	Polyclonal
Clone ID	
Concentration	2 mg/mL
Conjugation	Unconjugated
Purification	This antibody is epitope-affinity purified from goat antiserum.
Dilution Range	WB 1:500-1:5000
Formulation	PBS, 20% glycerol and 0.05% sodium azide.
Isotype	IgG
Storage	For continuous use, store at 2-8 C for one-two days. For extended storage, store in -20 C freezer. Working dilution samples should be discarded if not used within 12 hours.
Instruction	

TARGET INFORMATION

Gene ID	
Gene Symbol	
Uniprot ID	
Immunogen	Purified recombinant peptide QPELAPEDPED produced in E. coli.
Immunogen Region	
Specificity	Reacts specifically with HSV-tagged recombinant fusion proteins expressed in transfected mammalian cells or produced by in vitro translation.
Immunogen Sequence	



Anti-HSV antibody at 1:2500 dilution; lysates at 20 ng of protein per lane; rabbit polyclonal to goat IgG (HRP) at 1:10000 dilution

This product is suitable for in-vitro studies under the RESEARCH USE ONLY [RUO] licence. This product must not be used as for diagnostic or other medical purposes.
 St John's Laboratory Ltd, Knowledge Dock Business Centre, University Way, London, E16 2RD | Tel: 0208 223 3081