

Anti-PDIA6 antibody (220aa C-Term) (STJ140160)

STJ140160

GENERAL INFORMATION

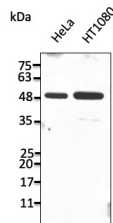
Product Type	Primary antibodies
Short Description	Goat polyclonal antibody anti-Protein disulfide-isomerase A6 (220aa C-Term) is suitable for use in Western Blot research applications.
Applications	WB
Host/Source	Goat
Reactivity	Human, Rat, Mouse, Monkey, Canine

PRODUCT PROPERTIES

Clonality	Polyclonal
Clone ID	
Concentration	3 mg/mL
Conjugation	Unconjugated
Purification	This antibody is epitope-affinity purified from goat antiserum.
Dilution Range	WB 1:500-1:2000
Formulation	PBS, 20% glycerol and 0.05% sodium azide.
Isotype	IgG
Storage	For continuous use, store at 2-8 C for one-two days. For extended storage, store in -20 C freezer. Working dilution samples should be discarded if not used within 12 hours.
Instruction	

TARGET INFORMATION

Gene ID	10130
Gene Symbol	PDIA6
Uniprot ID	PDIA6_HUMAN
Immunogen	Recombinant peptide derived from within residues 220 aa to the C-terminus of human PDIA6 produced in E. coli.
Immunogen Region	220aa C-Term
Specificity	Detects endogenous levels of PDIA6 by Western blot.
Immunogen Sequence	



Anti-PDIA6 antibody at 1:1000 dilution; lysates at 50 µg per lane; rabbit polyclonal to goat IgG (HRP) at 1:10000 dilution

This product is suitable for in-vitro studies under the RESEARCH USE ONLY [RUO] licence. This product must not be used as for diagnostic or other medical purposes.
 St John's Laboratory Ltd, Knowledge Dock Business Centre, University Way, London, E16 2RD | Tel: 0208 223 3081