

Anti-ATP1A1 antibody (100aa to N-Term) (STJ140149)

STJ140149

GENERAL INFORMATION

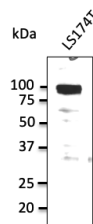
Product Type	Primary antibodies
Short Description	Goat polyclonal antibody anti-ATPase Na ⁺ /K ⁺ transporting subunit alpha 1 (100aa to N-Term) is suitable for use in Western Blot research applications.
Applications	WB
Host/Source	Goat
Reactivity	Human, Rat, Mouse, Monkey, Canine

PRODUCT PROPERTIES

Clonality	Polyclonal
Clone ID	
Concentration	3 mg/mL
Conjugation	Unconjugated
Purification	This antibody is epitope-affinity purified from goat antiserum.
Dilution Range	WB 1:500-1:2000
Formulation	PBS, 20% glycerol and 0.05% sodium azide.
Isotype	IgG
Storage	For continuous use, store at 2-8 C for one-two days. For extended storage, store in -20 C freezer. Working dilution samples should be discarded if not used within 12 hours.
Instruction	

TARGET INFORMATION

Gene ID	476
Gene Symbol	ATP1A1
Uniprot ID	AT1A1_HUMAN
Immunogen	Purified recombinant peptide derived from within residues 100 aa to N-terminus of human ATP1a1 produced in E. coli.
Immunogen Region	100aa to N-Term
Specificity	Detects endogenous levels of ATP1a1 by Western blot in the whole cell lysates (HeLa, LS174T, SKOV3, etc.).
Immunogen Sequence	



Endogenous ATP1a1 detected with at 1:1000 dilution; lysate at 50 µg per lane and rabbit polyclonal to goat IgG (HRP) at 1:10000 dilution

This product is suitable for in-vitro studies under the RESEARCH USE ONLY [RUO] licence. This product must not be used as for diagnostic or other medical purposes.
St John's Laboratory Ltd, Knowledge Dock Business Centre, University Way, London, E16 2RD | Tel: 0208 223 3081