

## Anti-RFP antibody (STJ140145)

STJ140145

### GENERAL INFORMATION

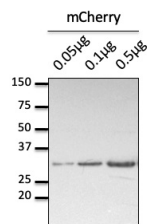
<b>Product Type</b>	Primary antibodies
<b>Short Description</b>	Chicken polyclonal antibody anti-Red Fluorescent Protein is suitable for use in Western Blot, Immunofluorescence and ELISA research applications.
<b>Applications</b>	WB, IF, ELISA
<b>Host/Source</b>	Chicken
<b>Reactivity</b>	Transfected cells

### PRODUCT PROPERTIES

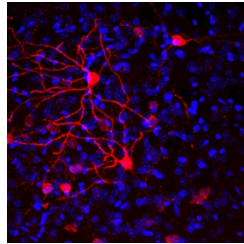
<b>Clonality</b>	Polyclonal
<b>Clone ID</b>	
<b>Concentration</b>	2 mg/mL
<b>Conjugation</b>	Unconjugated
<b>Purification</b>	Affinity purified using the immunogen immobilized on a solid support.
<b>Dilution Range</b>	WB 1:10
<b>Formulation</b>	PBS, 20% glycerol and 0.05% sodium azide.
<b>Isotype</b>	IgY
<b>Storage</b>	For continuous use, store at 2-8 C for one-two days. For extended storage, store in -20 C freezer. Working dilution samples should be discarded if not used within 12 hours.
<b>Instruction</b>	

### TARGET INFORMATION

<b>Gene ID</b>	
<b>Gene Symbol</b>	
<b>Uniprot ID</b>	
<b>Immunogen</b>	Affinity purified recombinant Red Fluorescent Protein (mCherry).
<b>Immunogen Region</b>	
<b>Specificity</b>	This antibody recognizes a single band with predicted molecular weight in Western blot analysis.
<b>Immunogen Sequence</b>	



Anti-mCherry antibody at 1:15, 000 dilution; 0.05 µg, 0.1 µg and 0.5 µg of purified recombinant mCherry; rabbit polyclonal to chicken IgY (HRP) at 1:10000 dilution



Immunofluorescence - Mice brain transduced with AAV with Cre-dependent expression of mCherry. Free-floating slices fixed with 4% of PFA, antibody at 1:1000 dilution; Courtesy of Rodrigues, Univ Minho

This product is suitable for in-vitro studies under the RESEARCH USE ONLY [RUO] licence. This product must not be used as for diagnostic or other medical purposes.  
 St John's Laboratory Ltd, Knowledge Dock Business Centre, University Way, London, E16 2RD | Tel: 0208 223 3081