

Anti-STUB1 antibody (STJ140143)

STJ140143

GENERAL INFORMATION

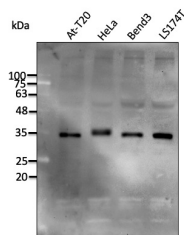
Product Type	Primary antibodies
Short Description	Goat polyclonal antibody anti-STIP1 homology and U-box containing protein 1, E3 ubiquitin protein ligase is suitable for use in Western Blot research applications.
Applications	WB
Host/Source	Goat
Reactivity	Human, Rat, Mouse, Monkey, Canine

PRODUCT PROPERTIES

Clonality	Polyclonal
Clone ID	
Concentration	3 mg/mL
Conjugation	Unconjugated
Purification	This antibody is epitope-affinity purified from goat antiserum.
Dilution Range	WB 1:500-1:5000
Formulation	PBS, 20% glycerol and 0.05% sodium azide.
Isotype	IgG
Storage	For continuous use, store at 2-8 C for one-two days. For extended storage, store in -20 C freezer. Working dilution samples should be discarded if not used within 12 hours.
Instruction	

TARGET INFORMATION

Gene ID	10273
Gene Symbol	STUB1
Uniprot ID	CHIP_HUMAN
Immunogen	Purified recombinant human STUB1 protein produced in E. coli.
Immunogen Region	
Specificity	Detects endogenous levels of STUB1 by Western blot.
Immunogen Sequence	



Anti-STUB1 antibody at 1:2500 dilution; lysates at 50 µg per lane; rabbit polyclonal to goat IgG (HRP) at 1:10000 dilution

This product is suitable for in-vitro studies under the RESEARCH USE ONLY [RUO] licence. This product must not be used as for diagnostic or other medical purposes.
 St John's Laboratory Ltd, Knowledge Dock Business Centre, University Way, London, E16 2RD | Tel: 0208 223 3081