

## Anti-CHM antibody (617 to C-Term) (STJ140142)

STJ140142

### GENERAL INFORMATION

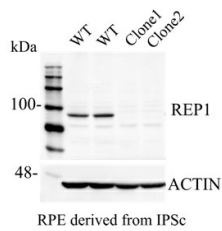
|                          |   |
|--------------------------|---|
| <b>Product Type</b>      | Primary antibodies  |
| <b>Short Description</b> | Goat polyclonal antibody anti-Choroideremia (Rab escort protein 1) (617 to C-Term) is suitable for use in Western Blot research applications. |
| <b>Applications</b>      | WB  |
| <b>Host/Source</b>       | Goat  |
| <b>Reactivity</b>        | Human, Rat, Mouse, Monkey, Canine   |

### PRODUCT PROPERTIES

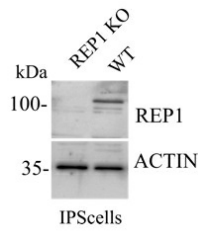
|                       |  |
|-----------------------|--|
| <b>Clonality</b>      | Polyclonal   |
| <b>Clone ID</b>       |  |
| <b>Concentration</b>  | 4 mg/mL  |
| <b>Conjugation</b>    | Unconjugated   |
| <b>Purification</b>   | This antibody is epitope-affinity purified from goat antiserum.  |
| <b>Dilution Range</b> | WB 1:500-1:2000  |
| <b>Formulation</b>    | PBS, 20% glycerol and 0.05% sodium azide.  |
| <b>Isotype</b>        | IgG  |
| <b>Storage</b>        | For continuous use, store at 2-8 C for one-two days. For extended storage, store in -20 C freezer. Working dilution samples should be discarded if not used within 12 hours. |
| <b>Instruction</b>    |  |

### TARGET INFORMATION

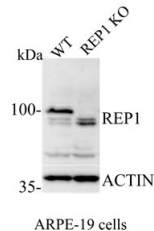
|                           |  |
|---------------------------|--|
| <b>Gene ID</b>            | 1121   |
| <b>Gene Symbol</b>        | CHM  |
| <b>Uniprot ID</b>         | RAE1_HUMAN   |
| <b>Immunogen</b>          | Purified recombinant peptide derived from within residues 617 aa-stop at the C-terminus of human Rep1 produced in E. coli. |
| <b>Immunogen Region</b>   | 617 to C-Term  |
| <b>Specificity</b>        | Detects endogenous Rep1 and in transfected cells by Western blot.  |
| <b>Immunogen Sequence</b> |  |



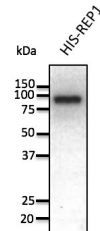
Anti-REP1 antibody at 1:1000 dilution 50 ng of recombinant protein per lane rabbit polyclonal to goat IgG (HRP) at 1:10000 dilution.



Anti-REP1 antibody knockout validation with IPS cell line.



Anti-REP1 antibody knockout validation with ARPE-19 cell line.



Western blot of HIS-REP1 protein tag with Anti-REP1 antibody.

This product is suitable for in-vitro studies under the RESEARCH USE ONLY [RUO] licence. This product must not be used as for diagnostic or other medical purposes.  
 St John's Laboratory Ltd, Knowledge Dock Business Centre, University Way, London, E16 2RD | Tel: 0208 223 3081