

Anti-RAB1B antibody (110aa C-Term) (STJ140140)

STJ140140

GENERAL INFORMATION

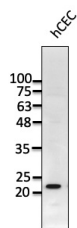
Product Type	Primary antibodies
Short Description	Goat polyclonal antibody anti-RAB1, member RAS oncogene family (110aa C-Term) is suitable for use in Western Blot and Immunofluorescence research applications.
Applications	WB, IF
Host/Source	Goat
Reactivity	Human, Rat, Mouse, Monkey, Canine

PRODUCT PROPERTIES

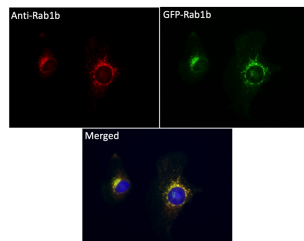
Clonality	Polyclonal
Clone ID	
Concentration	3 mg/mL
Conjugation	Unconjugated
Purification	This antibody is epitope-affinity purified from goat antiserum.
Dilution Range	WB 1:250-1:5000 IF 1:100-1:500
Formulation	PBS, 20% glycerol and 0.05% sodium azide.
Isotype	IgG
Storage Instruction	Store at -20 C for long-term storage. Store at 2-8 C for up to one month.

TARGET INFORMATION

Gene ID	81876
Gene Symbol	RAB1B
Uniprot ID	RAB1B_HUMAN
Immunogen	Purified recombinant peptide derived from within residues 110 aa to the C-terminus of Rab1b produced in E. coli.
Immunogen Region	110aa C-Term
Specificity	Detects endogenous levels of Rab1b protein by Western blot in whole cell lysates and transfected cells with GFP-Rab1b cds.
Immunogen Sequence	



Anti-Rab1b antibody at 1:1000 dilution; lysates at 50 µg per lane; rabbit polyclonal to goat IgG (HRP) at 1:10000 dilution



Immunofluorescence – anti-Rab1bAb using hCEC cells transduced with GFP-Rab1b; cells were fixed with methanol and anti-Rab5a at 1:250

This product is suitable for in-vitro studies under the RESEARCH USE ONLY [RUO] licence. This product must not be used as for diagnostic or other medical purposes.
St John's Laboratory Ltd, Knowledge Dock Business Centre, University Way, London, E16 2RD | Tel: 0208 223 3081