

Anti-LMNA antibody (620aa C-term) (STJ140138)

STJ140138

GENERAL INFORMATION

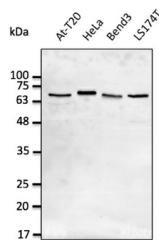
Product Type	Primary antibodies
Short Description	Goat polyclonal antibody anti-Lamin A/C (620aa C-term) is suitable for use in Western Blot research applications.
Applications	WB
Host/Source	Goat
Reactivity	Human, Rat, Mouse, Monkey, Canine

PRODUCT PROPERTIES

Clonality	Polyclonal
Clone ID	
Concentration	3 mg/mL
Conjugation	Unconjugated
Purification	This antibody is epitope-affinity purified from goat antiserum.
Dilution Range	WB 1:500-1:5000
Formulation	PBS, 20% glycerol and 0.05% sodium azide.
Isotype	IgG
Storage	For continuous use, store at 2-8 C for one-two days. For extended storage, store in -20 C freezer. Working dilution samples should be discarded if not used within 12 hours.
Instruction	

TARGET INFORMATION

Gene ID	4000
Gene Symbol	LMNA
Uniprot ID	LMNA_HUMAN
Immunogen	Purified recombinant peptide within residues 620 aa to C-term of human LMNA produced in E. coli.
Immunogen Region	620aa C-term
Specificity	Detects a band of 65-70 kDa by Western blot in whole cell lysates.
Immunogen Sequence	



Anti-LMNA antibody at 1:2500 dilution; lysates at 50 µg per lane; rabbit polyclonal to goat IgG (HRP) at 1:10000 dilution

This product is suitable for in-vitro studies under the RESEARCH USE ONLY [RUO] licence. This product must not be used as for diagnostic or other medical purposes.
 St John's Laboratory Ltd, Knowledge Dock Business Centre, University Way, London, E16 2RD | Tel: 0208 223 3081