

Anti-EGFR antibody (1162aa C-Term) (STJ140129)

STJ140129

GENERAL INFORMATION

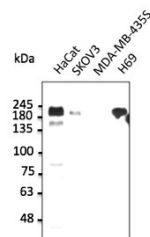
Product Type	Primary antibodies
Short Description	Goat polyclonal antibody anti-Epidermal growth factor receptor (1162aa C-Term) is suitable for use in Western Blot, Immunohistochemistry and Immunohistochemistry research applications.
Applications	WB, IHC-F, IHC-P
Host/Source	Goat
Reactivity	Human, Rat, Mouse, Monkey, Canine

PRODUCT PROPERTIES

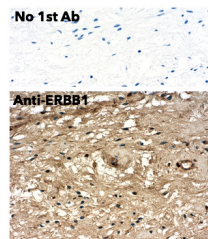
Clonality	Polyclonal
Clone ID	
Concentration	3 mg/mL
Conjugation	Unconjugated
Purification	This antibody is epitope-affinity purified from goat antiserum.
Dilution Range	WB 1:500-1:5000 IHC-F 1:250-1:1000 IHC-P 1:250-1:1000
Formulation	PBS, 20% glycerol and 0.05% sodium azide.
Isotype	IgG
Storage	For continuous use, store at 2-8 C for one-two days. For extended storage, store in -20 C freezer. Working dilution samples should be discarded if not used within 12 hours.
Instruction	

TARGET INFORMATION

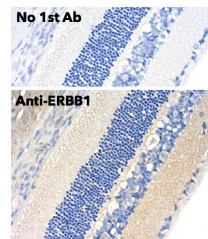
Gene ID	1956
Gene Symbol	EGFR
Uniprot ID	EGFR_HUMAN
Immunogen	Purified recombinant peptide derived from within residues 1, 162 aa to the C-terminus of human ERBB1 produced in E. coli.
Immunogen Region	1162aa C-Term
Specificity	This antibody gives a positive signal in the following human (HaCat, SKOV3 and H69) whole cell lysates by Western blot.
Immunogen Sequence	



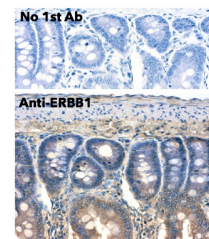
Anti-ERBB1 antibody at 1:2500 dilution 50 µg of total protein per lane rabbit polyclonal to goat IgG (HRP) at 1:10000 dilution



Immunohistochemistry of human cervix using anti-ERBB1 antibody and FFPE tissue after heat-induced antigen retrieval. Anti-ERBB1 antibody at 1:500:DAB detection.



Immunohistochemistry of rat eye using anti-ERBB1 antibody and FFPE tissue after heat-induced antigen retrieval. Anti-ERBB1 antibody at 1:500:DAB detection.



Immunohistochemistry of mouse intestine using anti-ERBB1 antibody and FFPE tissue after heat-induced antigen retrieval. Anti-ERBB1 antibody at 1:500:DAB detection.