

## Anti-TP53 antibody (280aa C-Term) (STJ140114)

STJ140114

### GENERAL INFORMATION

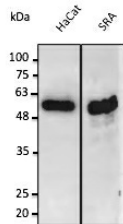
|                          |  |
|--------------------------|--|
| <b>Product Type</b>      | Primary antibodies   |
| <b>Short Description</b> | Goat polyclonal antibody anti-Tumor protein p53 (280aa C-Term) is suitable for use in Western Blot and Immunofluorescence research applications. |
| <b>Applications</b>      | WB, IF   |
| <b>Host/Source</b>       | Goat   |
| <b>Reactivity</b>        | Human, Rat, Mouse, Monkey, Canine  |

### PRODUCT PROPERTIES

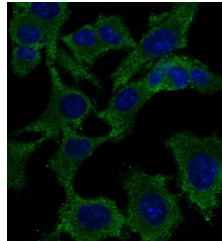
|                       |  |
|-----------------------|--|
| <b>Clonality</b>      | Polyclonal   |
| <b>Clone ID</b>       |  |
| <b>Concentration</b>  | 4 mg/mL  |
| <b>Conjugation</b>    | Unconjugated   |
| <b>Purification</b>   | This antibody is epitope-affinity purified from goat antiserum.  |
| <b>Dilution Range</b> | WB 1:500-1:5000<br>IF 1:25-1:250   |
| <b>Formulation</b>    | PBS, 20% glycerol and 0.05% sodium azide.  |
| <b>Isotype</b>        | IgG  |
| <b>Storage</b>        | For continuous use, store at 2-8 C for one-two days. For extended storage, store in -20 C freezer. Working dilution samples should be discarded if not used within 12 hours. |
| <b>Instruction</b>    |  |

### TARGET INFORMATION

|                           |  |
|---------------------------|--|
| <b>Gene ID</b>            | 7157   |
| <b>Gene Symbol</b>        | TP53   |
| <b>Uniprot ID</b>         | P53_HUMAN  |
| <b>Immunogen</b>          | Purified recombinant peptide derived from within residues 280 aa to the C-terminus of human P53 produced in E. coli. |
| <b>Immunogen Region</b>   | 280aa C-Term   |
| <b>Specificity</b>        | Detects endogenous levels of P53 by Western blot and in transfected cells with GFP-P53.                              |
| <b>Immunogen Sequence</b> |  |



Anti-P53 antibody at 1:2500 dilution; 50 µg of total protein per lane; rabbit polyclonal to goat IgG (HRP) at 1:10000 dilution



Immunofluorescence - anti-P53 antibody in Hepa1-6 cells at 1:50 dilution; cells were fixed with methanol

This product is suitable for in-vitro studies under the RESEARCH USE ONLY [RUO] licence. This product must not be used as for diagnostic or other medical purposes.  
St John's Laboratory Ltd, Knowledge Dock Business Centre, University Way, London, E16 2RD | Tel: 0208 223 3081