

## Anti-RAB10 antibody (100aa C-Term) (STJ140110)

STJ140110

### GENERAL INFORMATION

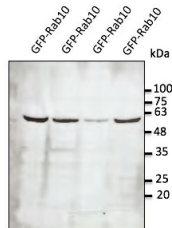
<b>Product Type</b>	Primary antibodies
<b>Short Description</b>	Goat polyclonal antibody anti-RAB10, member RAS oncogene family (100aa C-Term) is suitable for use in Western Blot research applications.
<b>Applications</b>	WB
<b>Host/Source</b>	Goat
<b>Reactivity</b>	Human, Rat, Mouse, Monkey, Canine

### PRODUCT PROPERTIES

<b>Clonality</b>	Polyclonal
<b>Clone ID</b>	
<b>Concentration</b>	3 mg/mL
<b>Conjugation</b>	Unconjugated
<b>Purification</b>	This antibody is epitope-affinity purified from goat antiserum.
<b>Dilution Range</b>	WB 1:250-1:2000
<b>Formulation</b>	PBS, 20% glycerol and 0.05% sodium azide.
<b>Isotype</b>	IgG
<b>Storage</b>	For continuous use, store at 2-8 C for one-two days. For extended storage, store in -20 C freezer. Working dilution samples should be discarded if not used within 12 hours.
<b>Instruction</b>	

### TARGET INFORMATION

<b>Gene ID</b>	10890
<b>Gene Symbol</b>	RAB10
<b>Uniprot ID</b>	RAB10_HUMAN
<b>Immunogen</b>	Purified recombinant peptide derived from within residues 100 aa to the C-terminus of mouse Rab10 produced in E. coli.
<b>Immunogen Region</b>	100aa C-Term
<b>Specificity</b>	Detects Rab10 by Western blot in transfected cells with GFP-Rab10.
<b>Immunogen Sequence</b>	



Anti-Rab10 antibody at 1:500 dilution; 293HEK transfected with GFP-Rab10; lysates at 100 µg per lane; rabbit polyclonal to goat IgG (HRP) at 1:10000 dilution