

Anti-RAB5A antibody (115aa C-Term) (STJ140104)

STJ140104

GENERAL INFORMATION

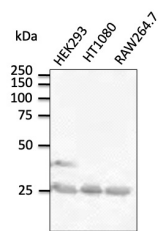
| | |
|--------------------------|--|
| Product Type | Primary antibodies |
| Short Description | Goat polyclonal antibody anti-RAB5A, member RAS oncogene family (115aa C-Term) is suitable for use in Western Blot and Immunofluorescence research applications. |
| Applications | WB, IF |
| Host/Source | Goat |
| Reactivity | Human, Rat, Mouse, Monkey, Canine |

PRODUCT PROPERTIES

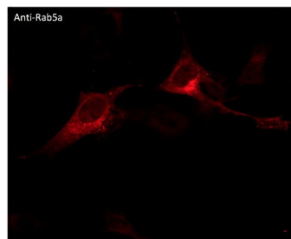
| | |
|----------------------------|--|
| Clonality | Polyclonal |
| Clone ID | |
| Concentration | 4 mg/mL |
| Conjugation | Unconjugated |
| Purification | This antibody is epitope-affinity purified from goat antiserum. |
| Dilution Range | WB 1:250-1:2000 IF 1:100-1:500 |
| Formulation | PBS, 20% glycerol and 0.05% sodium azide. |
| Isotype | IgG |
| Storage Instruction | For continuous use, store at 2-8 C for one-two days. For extended storage, store in -20 C freezer. Working dilution samples should be discarded if not used within 12 hours. |

TARGET INFORMATION

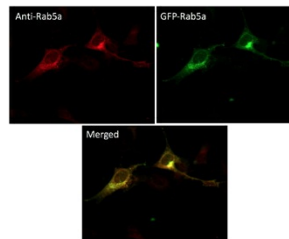
| | |
|---------------------------|---|
| Gene ID | 5868 |
| Gene Symbol | RAB5A |
| Uniprot ID | RAB5A_HUMAN |
| Immunogen | Purified recombinant peptide derived from within residues 115 aa to the C-terminus of mouse Rab5a produced in E. coli. |
| Immunogen Region | 115aa C-Term |
| Specificity | Detects Rab5a protein by Western blot in cell lysates and transfected cells with GFP-Rab5a. This Ab is specific for Rab5a; it does not recognize Rab5b and Rab5c. |
| Immunogen Sequence | |



Anti-Rab5a antibody at 1:500 dilution; lysates at 100 µg per lane; rabbit polyclonal to goat IgG (HRP) at 1:10000 dilution



Immunofluorescence - anti-Rab5a antibody using NIH3T3 cells transfected with GFP-Rab5a; cells were fixed with methanol and anti-Rab5a at 1:100



Immunofluorescence - anti-Rab5a antibody using NIH3T3 cells transfected with GFP-Rab5a; cells were fixed with methanol and anti-Rab5a at 1:100

This product is suitable for in-vitro studies under the RESEARCH USE ONLY [RUO] licence. This product must not be used as for diagnostic or other medical purposes.
St John's Laboratory Ltd, Knowledge Dock Business Centre, University Way, London, E16 2RD | Tel: 0208 223 3081