

Anti-KDR antibody (20-125aa) (STJ140092)

STJ140092

GENERAL INFORMATION

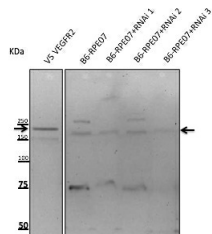
Product Type	Primary antibodies
Short Description	Goat polyclonal antibody anti-Kinase insert receptor (a type III receptor tyrosine kinase) (20-125aa) is suitable for use in Western Blot and Immunofluorescence research applications.
Applications	WB, IF
Host/Source	Goat
Reactivity	Human, Rat, Mouse, Monkey

PRODUCT PROPERTIES

Clonality	Polyclonal
Clone ID	
Concentration	3 mg/mL
Conjugation	Unconjugated
Purification	This antibody is epitope-affinity purified from goat antiserum.
Dilution Range	WB 1:500-1:2000 IF 1:25-1:250
Formulation	PBS, 20% glycerol and 0.05% sodium azide.
Isotype	IgG
Storage	For continuous use, store at 2-8 C for one-two days. For extended storage, store in -20 C freezer. Working dilution samples should be discarded if not used within 12 hours.
Instruction	

TARGET INFORMATION

Gene ID	3791
Gene Symbol	KDR
Uniprot ID	VGFR2_HUMAN
Immunogen	Purified recombinant peptide derived from the N-terminus (residues 20-125 aa) of human VEGFR2 produced in E. coli.
Immunogen Region	20-125aa
Specificity	This antibody reacts with a 180 kDa protein and detects endogenous levels of total VEGFR2 protein.
Immunogen Sequence	



Anti-VEGFR2 antibody at 1:500 dilution; lysates at 50µg per lane; rabbit polyclonal to goat IgG (HRP) at 1:10000 dilution