

## Anti-TUBA4A antibody (80aa N-Term) (STJ140087)

STJ140087

### GENERAL INFORMATION

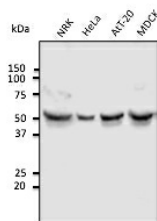
<b>Product Type</b>	Primary antibodies
<b>Short Description</b>	Goat polyclonal antibody anti-Tubulin, alpha 4a (80aa N-Term) is suitable for use in Western Blot research applications.
<b>Applications</b>	WB
<b>Host/Source</b>	Goat
<b>Reactivity</b>	Human, Rat, Mouse, Monkey, Canine

### PRODUCT PROPERTIES

<b>Clonality</b>	Polyclonal
<b>Clone ID</b>	
<b>Concentration</b>	3 mg/mL
<b>Conjugation</b>	Unconjugated
<b>Purification</b>	This antibody is epitope-affinity purified from goat antiserum.
<b>Dilution Range</b>	WB 1:250-1:2000
<b>Formulation</b>	PBS, 20% glycerol and 0.05% sodium azide.
<b>Isotype</b>	IgG
<b>Storage</b>	For continuous use, store at 2-8 C for one-two days. For extended storage, store in -20 C freezer. Working dilution samples should be discarded if not used within 12 hours.
<b>Instruction</b>	

### TARGET INFORMATION

<b>Gene ID</b>	<a href="#">7277</a>
<b>Gene Symbol</b>	<a href="#">TUBA4A</a>
<b>Uniprot ID</b>	<a href="#">TBA4A_HUMAN</a>
<b>Immunogen</b>	Purified recombinant peptide derived from within residues 80 aa to the N-terminus of human alpha tubulin produced in E. coli.
<b>Immunogen Region</b>	80aa N-Term
<b>Specificity</b>	This antibody gives a positive signal in the following human (HeLa) , rat (NRK) , mouse (AtT-20) , dog (MDCK) whole cell lysates.
<b>Immunogen Sequence</b>	



Anti-Tubulin alpha4A antibody at 1:1000 dilution; lysates at 100 µg per lane; Rabbit polyclonal to goat IgG (HRP) at 1:10000 dilution.

This product is suitable for in-vitro studies under the RESEARCH USE ONLY [RUO] licence. This product must not be used as for diagnostic or other medical purposes.  
 St John's Laboratory Ltd, Knowledge Dock Business Centre, University Way, London, E16 2RD | Tel: 0208 223 3081