

## Anti-RAB32 antibody (120aa C-Term) (STJ140080)

STJ140080

### GENERAL INFORMATION

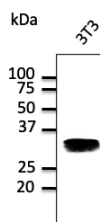
<b>Product Type</b>	Primary antibodies
<b>Short Description</b>	Goat polyclonal antibody anti-RAB32, member RAS oncogene family (120aa C-Term) is suitable for use in Western Blot and Immunofluorescence research applications.
<b>Applications</b>	WB, IF
<b>Host/Source</b>	Goat
<b>Reactivity</b>	Human, Rat, Mouse, Monkey, Canine

### PRODUCT PROPERTIES

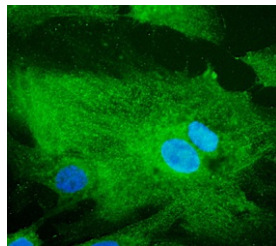
<b>Clonality</b>	Polyclonal
<b>Clone ID</b>	
<b>Concentration</b>	4 mg/mL
<b>Conjugation</b>	Unconjugated
<b>Purification</b>	This antibody is epitope-affinity purified from goat antiserum.
<b>Dilution Range</b>	WB 1:500-1:2000 IF 1:100-1:500
<b>Formulation</b>	PBS, 20% glycerol and 0.05% sodium azide.
<b>Isotype</b>	IgG
<b>Storage</b>	For continuous use, store at 2-8 C for one-two days. For extended storage, store in -20 C freezer. Working dilution samples should be discarded if not used within 12 hours.
<b>Instruction</b>	

### TARGET INFORMATION

<b>Gene ID</b>	10981
<b>Gene Symbol</b>	RAB32
<b>Uniprot ID</b>	RAB32_HUMAN
<b>Immunogen</b>	Purified recombinant peptide derived from within residues 120 aa to the C-terminus of mouse Rab27a produced in E. coli.
<b>Immunogen Region</b>	120aa C-Term
<b>Specificity</b>	Detects an endogenous band by Western blot in Melan-ink, XB2 and 3T3 cell line lysates (approximately 30 kDa) and in transfected cells with GFP-Rab32 cds.
<b>Immunogen Sequence</b>	



Endogeneous Rab32 protein detected with anti-Rab32 polyclonal antibody at 1:500 dilution; lysate at 100 µg per lane



Immunostaining of primary RPE cells with Rab32 antibody