

## Anti-RAB27A antibody (120aa C-Term) (STJ140075)

STJ140075

### GENERAL INFORMATION

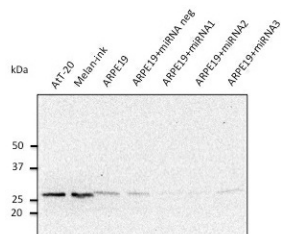
<b>Product Type</b>	Primary antibodies
<b>Short Description</b>	Goat polyclonal antibody anti-RAB27A, member RAS oncogene family (120aa C-Term) is suitable for use in Western Blot, Immunohistochemistry and Immunofluorescence research applications.
<b>Applications</b>	WB, IHC-F, IHC-P, IF
<b>Host/Source</b>	Goat
<b>Reactivity</b>	Human, Rat, Mouse, Monkey, Canine

### PRODUCT PROPERTIES

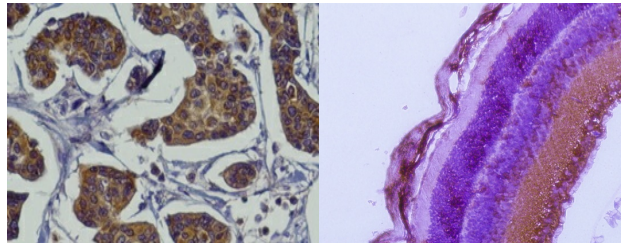
<b>Clonality</b>	Polyclonal
<b>Clone ID</b>	
<b>Concentration</b>	1 mg/mL
<b>Conjugation</b>	Unconjugated
<b>Purification</b>	This antibody is epitope-affinity purified from goat antiserum.
<b>Dilution Range</b>	WB 1:250-1:2000 IF 1:50-1:200 IHC-P 1:50-1:400 IHC-F 1:50-1:400
<b>Formulation</b>	PBS, 20% glycerol and 0.05% sodium azide.
<b>Isotype</b>	IgG
<b>Storage Instruction</b>	Store at -20 C for long-term storage. Store at 2-8 C for up to one month.

### TARGET INFORMATION

<b>Gene ID</b>	5873
<b>Gene Symbol</b>	RAB27A
<b>Uniprot ID</b>	RB27A_HUMAN
<b>Immunogen</b>	Purified recombinant peptide derived from within residues 120 aa to the C-terminus of mouse Rab27a produced in E. coli.
<b>Immunogen Region</b>	120aa C-Term
<b>Specificity</b>	Detects Rab27a by Western blot in the following human, rat and mouse whole cell lysates and transfected cells with GFP-Rab27a. This antibody also recognizes Rab27b protein.
<b>Immunogen Sequence</b>	



Anti-Rab27 antibody at 1:500 dilution; rabbit polyclonal to goat IgG (HRP) at 1:10000 dilution



Anti-Rab27a antibody Immunohistochemistry staining of mammary tissue; Immunohistochemistry of formalin-fixed, paraffin-embedded tissue after heat-induced antigen retrieval; Antibody concentration 1:200

Anti-Rab27a antibody Immunohistochemistry staining of albino mouse retina; Immunohistochemistry of formalin-fixed, paraffin-embedded tissue after heat-induced antigen retrieval; Antibody concentration 1:200

This product is suitable for in-vitro studies under the RESEARCH USE ONLY [RUO] licence. This product must not be used as for diagnostic or other medical purposes.  
St John's Laboratory Ltd, Knowledge Dock Business Centre, University Way, London, E16 2RD | Tel: 0208 223 3081