

Anti-RAB25 antibody (120aa C-Term) (STJ140073)

STJ140073

GENERAL INFORMATION

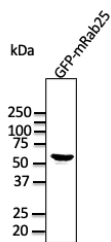
Product Type	Primary antibodies
Short Description	Goat polyclonal antibody anti-RAB25, member RAS oncogene family (120aa C-Term) is suitable for use in Western Blot, Immunohistochemistry and Immunofluorescence research applications.
Applications	WB, IHC-F, IHC-P, IF
Host/Source	Goat
Reactivity	Human, Rat, Mouse, Monkey, Canine

PRODUCT PROPERTIES

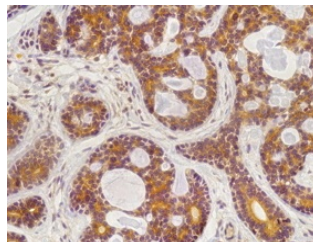
Clonality	Polyclonal
Clone ID	
Concentration	2 mg/mL
Conjugation	Unconjugated
Purification	This antibody is epitope-affinity purified from goat antiserum.
Dilution Range	WB 1:250-1:2000 IF 1:25-1:250 IHC-P 1:200-1:1:1000 IHC-F 1:200-1:1:1000
Formulation	PBS, 20% glycerol and 0.05% sodium azide.
Isotype	IgG
Storage Instruction	For continuous use, store at 2-8 C for one-two days. For extended storage, store in -20 C freezer. Working dilution samples should be discarded if not used within 12 hours.

TARGET INFORMATION

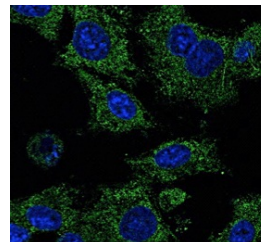
Gene ID	57111
Gene Symbol	RAB25
Uniprot ID	RAB25_HUMAN
Immunogen	Purified recombinant peptide derived from within residues 120 aa to the C-terminus of mouse Rab25 produced in E. coli.
Immunogen Region	120aa C-Term
Specificity	Detects Rab25 by Western blot in transfected cells with GFP-Rab25.
Immunogen Sequence	



Anti-Rab25 antibody at 1:1000 dilution; HEK293 cells transfected with GFP-Rab25; rabbit polyclonal to goat IgG (HRP) at 1:10000 dilution



Anti-Rab25 antibody Immunohistochemistry staining of mammary tissue; Immunohistochemistry of formalin-fixed, paraffin-embedded tissue after heat-induced antigen retrieval; antibody concentration 1:200



Immunofluorescence - anti-Rab25 antibody in Hepa1-6 cells at 1:50 dilution; methanol fixation

This product is suitable for in-vitro studies under the RESEARCH USE ONLY [RUO] licence. This product must not be used as for diagnostic or other medical purposes.
St John's Laboratory Ltd, Knowledge Dock Business Centre, University Way, London, E16 2RD | Tel: 0208 223 3081