

## Anti-RAB11B antibody (120aa C-Term) (STJ140069)

STJ140069

### GENERAL INFORMATION

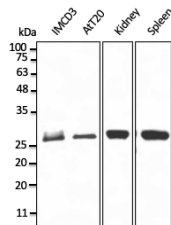
<b>Product Type</b>	Primary antibodies
<b>Short Description</b>	Goat polyclonal antibody anti-RAB11b, member RAS oncogene family (120aa C-Term) is suitable for use in Western Blot, Immunohistochemistry and Immunofluorescence research applications.
<b>Applications</b>	WB, IHC-F, IHC-P, IF
<b>Host/Source</b>	Goat
<b>Reactivity</b>	Human, Rat, Mouse, Monkey, Canine

### PRODUCT PROPERTIES

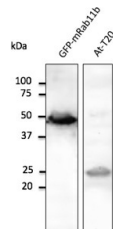
<b>Clonality</b>	Polyclonal
<b>Clone ID</b>	
<b>Concentration</b>	3 mg/mL
<b>Conjugation</b>	Unconjugated
<b>Purification</b>	This antibody is epitope-affinity purified from goat antiserum.
<b>Dilution Range</b>	WB 1:250-1:2000 IF 1:50-1:250 IHC-P 1:100-1:400 IHC-F 1:100-1:400
<b>Formulation</b>	PBS, 20% glycerol and 0.05% sodium azide.
<b>Isotype</b>	IgG
<b>Storage Instruction</b>	For continuous use, store at 2-8 C for one-two days. For extended storage, store in -20 C freezer. Working dilution samples should be discarded if not used within 12 hours.

### TARGET INFORMATION

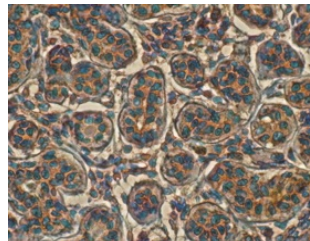
<b>Gene ID</b>	9230
<b>Gene Symbol</b>	RAB11B
<b>Uniprot ID</b>	RB11B_HUMAN
<b>Immunogen</b>	Purified recombinant peptide derived from within residues 120 aa to the C-terminus of mouse Rab11b produced in E. coli.
<b>Immunogen Region</b>	120aa C-Term
<b>Specificity</b>	Detects a band of 25 kDa by Western blot in the following human, rat and mouse whole cell lysates and transfected cells with GFP-Rab11b cds. This Ab is specific for Rab11b, it does not recognize Rab11a.
<b>Immunogen Sequence</b>	



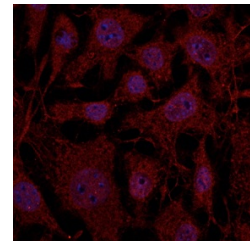
Anti-Rab11b antibody at 1:500 dilution; 50 ng of protein per lane; rabbit polyclonal to goat IgG (HRP) at 1:10000 dilution



Anti-Rab11b antibody at 1:500 dilution; HEK293 transfected with GFP-Rab11b lentivirus and AKT20 cell line; lysates at 100 µg per lane; rabbit polyclonal to goat IgG (HRP) at 1:10000 dilution



Anti-Rab11b antibody Immunohistochemistry staining of human mammary tissue; immunohistochemistry of formalin-fixed, paraffin-embedded tissue after heat-induced antigen retrieval; antibody concentration 1:200



Immunofluorescence - anti-Rab11b antibody at 1:100 dilution in NIH-3T3 cells; cells were fixed with methanol and permeabilized with 0.1% saponin

This product is suitable for in-vitro studies under the RESEARCH USE ONLY [RUO] licence. This product must not be used as for diagnostic or other medical purposes.  
St John's Laboratory Ltd, Knowledge Dock Business Centre, University Way, London, E16 2RD | Tel: 0208 223 3081