

Anti-RAB1A antibody (110aa C-Term) (STJ140056)

STJ140056

GENERAL INFORMATION

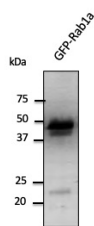
Product Type	Primary antibodies
Short Description	Goat polyclonal antibody anti-RAB1, member RAS oncogene family (110aa C-Term) is suitable for use in Western Blot, Immunohistochemistry, Immunofluorescence and ELISA research applications.
Applications	WB, IHC-F, IHC-P, IF, ELISA
Host/Source	Goat
Reactivity	Human, Rat, Mouse, Monkey, Canine

PRODUCT PROPERTIES

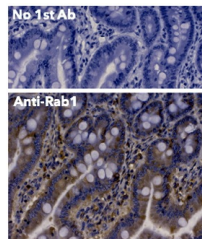
Clonality	Polyclonal
Clone ID	
Concentration	3 mg/mL
Conjugation	Unconjugated
Purification	This antibody is epitope-affinity purified from goat antiserum.
Dilution	WB 1:250-1:1000
Range	IHC-F 1:250-1:1
Formulation	PBS, 20% glycerol and 0.05% sodium azide.
Isotype	IgG
Storage	For continuous use, store at 2-8 C for one-two days. For extended storage, store in-20 C freezer. Working dilution samples should be discarded if not used within 12 hours.
Instruction	

TARGET INFORMATION

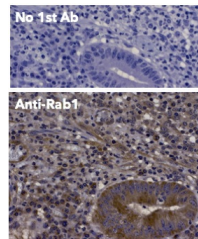
Gene ID	5861
Gene Symbol	RAB1A
Uniprot ID	RAB1A_HUMAN
Immunogen	Purified recombinant peptides derived from within residues 110 aa to the C-terminus of mouse Rab1a and Rab1b produced in E. coli.
Immunogen Region	110aa C-Term
Specificity	Detects total Rab1 protein by Western blot in the following human, rat and mouse whole cell lysates and transfected cells with GFP-Rab1a and Rab1a and GFP-Rab1b cds.
Immunogen Sequence	



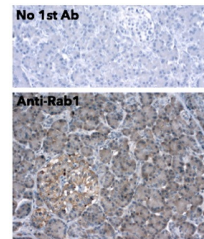
Anti-Rab1 antibody at 1:1000 dilution 293HEK transfected lysate at 50 µg per lane Rabbit polyclonal to goat IgG (HRP) at 1:10000 dilution.



Immunohistochemistry of mouse intestine using anti-Rab1 antibody and FFPE tissue after heat-induced antigen retrieval. Anti-Rab1 antibody at 1:500:DAB detection.



Immunohistochemistry of human appendix using anti-Rab1 antibody and FFPE tissue after heat-induced antigen retrieval. Anti-Rab1 antibody at 1:500:DAB detection.



Immunohistochemistry of human pancreas using anti-Rab1 antibody and FFPE tissue after heat-induced antigen retrieval. Anti-Rab1 antibody at 1:250:DAB detection.