

Anti-TUBA4A antibody (400aa C-Term) (STJ140051)

STJ140051

GENERAL INFORMATION

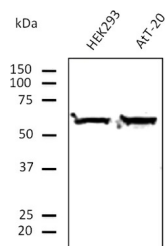
| | |
|--------------------------|--|
| Product Type | Primary antibodies |
| Short Description | Goat polyclonal antibody anti-Tubulin, alpha 4a (400aa C-Term) is suitable for use in Western Blot and Immunofluorescence research applications. |
| Applications | WB, IF |
| Host/Source | Goat |
| Reactivity | Human, Rat, Mouse, Monkey, Canine |

PRODUCT PROPERTIES

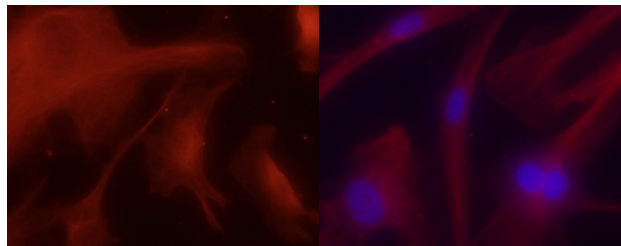
| | |
|-----------------------|--|
| Clonality | Polyclonal |
| Clone ID | |
| Concentration | 2 mg/mL |
| Conjugation | Unconjugated |
| Purification | This antibody is epitope-affinity purified from goat antiserum. |
| Dilution Range | WB 1:250-1:2000 IF 1:50-1:200 |
| Formulation | PBS, 20% glycerol and 0.05% sodium azide. |
| Isotype | IgG |
| Storage | For continuous use, store at 2-8 C for one-two days. For extended storage, store in -20 C freezer. Working dilution samples should be discarded if not used within 12 hours. |
| Instruction | |

TARGET INFORMATION

| | |
|---------------------------|---|
| Gene ID | 7277 |
| Gene Symbol | TUBA4A |
| Uniprot ID | TBA4A_HUMAN |
| Immunogen | Purified recombinant peptide derived from within residues 400 aa to the C-terminus of human alpha tubulin produced in E. coli. |
| Immunogen Region | 400aa C-Term |
| Specificity | This antibody gives a positive signal in the following human (293A, HMEC-1, U-118, HaCat) , rat (TR-iBRB) , mouse (AT-20, Hepa) , canine (D17) and monkey (COS-7) whole cell lysates. |
| Immunogen Sequence | |



Anti-Tubulin alpha4A antibody at 1:1000 dilution; lysates at 100 µg per lane; Rabbit polyclonal to goat IgG (HRP) at 1:10000 dilution



Immunofluorescence – anti-Tubulin alpha4A antibody- Microtubule Marker in mouse embryonic fibroblasts at 1:50 dilution

Immunofluorescence – anti-Tubulin alpha4A antibody- Microtubule Marker in mouse embryonic fibroblasts at 1:50 dilution

This product is suitable for in-vitro studies under the RESEARCH USE ONLY [RUO] licence. This product must not be used as for diagnostic or other medical purposes.
St John's Laboratory Ltd, Knowledge Dock Business Centre, University Way, London, E16 2RD | Tel: 0208 223 3081