

Anti-RPS6 antibody (190aa C-Term) (STJ140049)

STJ140049

GENERAL INFORMATION

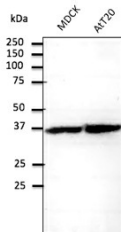
Product Type	Primary antibodies
Short Description	Goat polyclonal antibody anti-Tibosomal protein S6 (190aa C-Term) is suitable for use in Western Blot and Immunofluorescence research applications.
Applications	WB, IF
Host/Source	Goat
Reactivity	Human, Rat, Mouse, Monkey, Canine

PRODUCT PROPERTIES

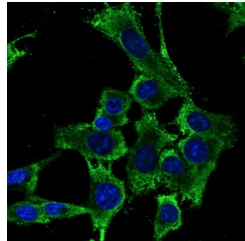
Clonality	Polyclonal
Clone ID	
Concentration	4 mg/mL
Conjugation	Unconjugated
Purification	This antibody is epitope-affinity purified from goat antiserum.
Dilution Range	WB 1:500-1:2000 IF 1:25-1:250
Formulation	PBS, 20% glycerol and 0.05% sodium azide.
Isotype	IgG
Storage	For continuous use, store at 2-8 C for one-two days. For extended storage, store in -20 C freezer. Working dilution samples should be discarded if not used within 12 hours.
Instruction	

TARGET INFORMATION

Gene ID	6194
Gene Symbol	RPS6
Uniprot ID	RS6_HUMAN
Immunogen	Recombinant peptide derived from within residues 190 aa to the C-terminus of human RPS6 produced in E.
Immunogen Region	190aa C-Term
Specificity	Detects a band of approximately 30 kDa by Western blot in the following whole cell lysates: MDCK, AtT20, Jurkat and 3T3.
Immunogen Sequence	



Anti-RPS6 antibody at 1:500 dilution; lysates at 100 µg per lane; rabbit polyclonal to goat IgG (HRP) at 1:10000 dilution



Confocal immunofluorescence of Hepa1-6 cells with RPS6 antibody at 1:100 dilution; methanol fixation

This product is suitable for in-vitro studies under the RESEARCH USE ONLY [RUO] licence. This product must not be used as for diagnostic or other medical purposes.
St John's Laboratory Ltd, Knowledge Dock Business Centre, University Way, London, E16 2RD | Tel: 0208 223 3081