

Anti-GAPDH antibody (240aa C-Term) (STJ140037)

STJ140037

GENERAL INFORMATION

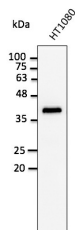
Product Type	Primary antibodies
Short Description	Goat polyclonal antibody anti-Glyceraldehyde-3-phosphate dehydrogenase (240aa C-Term) is suitable for use in Western Blot, Immunohistochemistry and Immunofluorescence research applications.
Applications	WB, IHC-F, IHC-P, IF
Host/Source	Goat
Reactivity	Human, Rat, Mouse, Monkey, Zebrafish, Canine

PRODUCT PROPERTIES

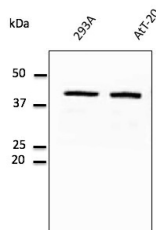
Clonality	Polyclonal
Clone ID	
Concentration	2 mg/mL
Conjugation	Unconjugated
Purification	This antibody is epitope-affinity purified from goat antiserum.
Dilution Range	WB 1:500-1:5000 IF 1:50-1:250 IHC-P 1:200-1:1000 IHC-F 1:200-1:1000
Formulation	PBS, 20% glycerol and 0.05% sodium azide.
Isotype	IgG
Storage Instruction	For continuous use, store at 2-8 C for one-two days. For extended storage, store in -20 C freezer. Working dilution samples should be discarded if not used within 12 hours.

TARGET INFORMATION

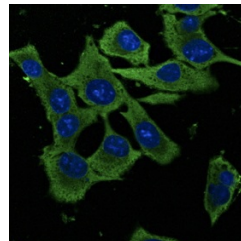
Gene ID	2597
Gene Symbol	GAPDH
Uniprot ID	G3P_HUMAN
Immunogen	Purified recombinant peptide derived from within residues 240 aa to the C-terminus of human GAPDH produced in E. coli.
Immunogen Region	240aa C-Term
Specificity	Detects a band of 37 kDa by Western blot in the following human (293A, HMEC-1, U-118, HaCat) , rat (TR-IBRB) , mouse (AtT-20, Hepa) , canine (D17) and monkey (COS-7) whole cell lysates.
Immunogen Sequence	



Anti-GAPDH antibody at 1:2500 dilution; lysates at 50 µg per lane; Rabbit polyclonal to goat IgG (HRP) at 1:10000 dilution



Anti-GAPDH antibody at 1:2500 dilution; lysates at 50 µg per lane; Rabbit polyclonal to goat IgG (HRP) at 1:10000 dilution



Immunofluorescence – anti-GAPDH antibody in Hepa-6 cells at 1:50 dilution; cells were fixed with methanol

This product is suitable for in-vitro studies under the RESEARCH USE ONLY [RUO] licence. This product must not be used as for diagnostic or other medical purposes.
St John's Laboratory Ltd, Knowledge Dock Business Centre, University Way, London, E16 2RD | Tel: 0208 223 3081