

Anti-EEA1 antibody (1230aa C-Term) (STJ140034)

STJ140034

GENERAL INFORMATION

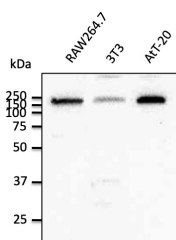
Product Type	Primary antibodies
Short Description	Goat polyclonal antibody anti-Early Endosome antigen 1 (1230aa C-Term) is suitable for use in Western Blot, Immunohistochemistry and Immunofluorescence research applications.
Applications	WB, IHC-F, IF
Host/Source	Goat
Reactivity	Human, Rat, Mouse, Monkey, Canine

PRODUCT PROPERTIES

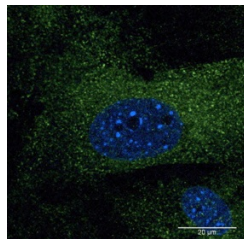
Clonality	Polyclonal
Clone ID	
Concentration	3 mg/mL
Conjugation	Unconjugated
Purification	This antibody is epitope-affinity purified from goat antiserum.
Dilution Range	WB 1:250-1:1000 IF 1:25-1:250 IHC-F 1:100-1:500
Formulation	PBS, 20% glycerol and 0.05% sodium azide.
Isotype	IgG
Storage	For continuous use, store at 2-8 deg;C for one-two days. For extended storage, store in -20 deg;C freezer. Working dilution samples should be discarded if not used within 12 hours.
Instruction	

TARGET INFORMATION

Gene ID	8411
Gene Symbol	EEA1
Uniprot ID	EEA1_HUMAN
Immunogen	Purified recombinant peptide within residues 1230 aa to the C-terminus of human EEA1 produced in E. coli.
Immunogen Region	1230aa C-Term
Specificity	Detects a band of 180 kDa by Western blot in the following human, mouse and rat whole cell lysates.
Immunogen Sequence	



Anti-EEA1 antibody at 1:500 dilution; Rabbit polyclonal to goat IgG (HRP) at 1:10000 dilution



Immunostaining of primary fibroblasts with EEA1 antibody at 1:50 dilution

This product is suitable for in-vitro studies under the RESEARCH USE ONLY [RUO] licence. This product must not be used as for diagnostic or other medical purposes.
St John's Laboratory Ltd, Knowledge Dock Business Centre, University Way, London, E16 2RD | Tel: 0208 223 3081