

Anti-FZR1 antibody (750 to 850) (STJ140027)

STJ140027

GENERAL INFORMATION

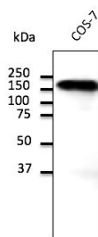
Product Type	Primary antibodies
Short Description	Goat polyclonal antibody anti-E-Cadherin (750 to 850) is suitable for use in Western Blot, Immunohistochemistry and Immunohistochemistry research applications.
Applications	WB, IHC-F, IHC-P
Host/Source	Goat
Reactivity	Human, Rat, Mouse, Monkey, Canine

PRODUCT PROPERTIES

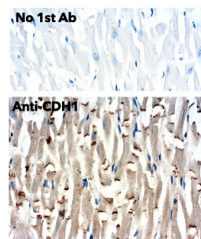
Clonality	Polyclonal
Clone ID	
Concentration	2 mg/mL
Conjugation	Unconjugated
Purification	This antibody is epitope-affinity purified from goat antiserum.
Dilution Range	WB 1:500-1:2000 IHC-F 1:250-1;1:000 IHC-P 1:250-1;1:000
Formulation	PBS, 20% glycerol and 0.05% sodium azide.
Isotype	IgG
Storage	For continuous use, store at 2-8 C for one-two days. For extended storage, store in -20 C freezer. Working dilution samples should be discarded if not used within 12 hours.
Instruction	

TARGET INFORMATION

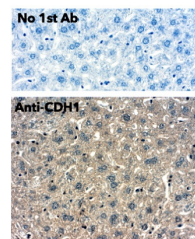
Gene ID	999
Gene Symbol	CDH1
Uniprot ID	CADH1_HUMAN
Immunogen	Purified recombinant peptide derived from within residues 750 to 850 of human CDH1 produced in E. coli.
Immunogen Region	750 to 850
Specificity	Detects endogenous levels of total E-cadherin protein by Western blot in the whole cell lysates (COS-7 and MDCK).
Immunogen Sequence	



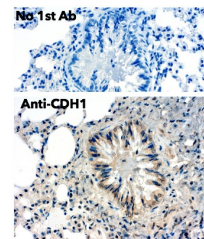
Endogenous CDH1 detected at 1:500 dilution lysate at 100 µg per lane and rabbit polyclonal to goat IgG (HRP) at 1:10000 dilution.



Immunohistochemistry of human myocardium using anti-CDH1 antibody and FFPE tissue after heat-induced antigen retrieval. Anti-CDH1 antibody at 1:500:DAB detection.



Immunohistochemistry of mouse liver using anti-CDH1 antibody and FFPE tissue after heat-induced antigen retrieval. Anti-CDH1 antibody at 1:500:DAB detection.



Immunohistochemistry of mouse lung using anti CDH1 antibody and FFPE tissue after heat-induced antigen retrieval. Anti-CDH1 antibody at 1:500:DAB detection.