

## Anti-CLTC-H Chain antibody (50aa to N-Term) (STJ140022)

STJ140022

### GENERAL INFORMATION

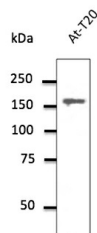
<b>Product Type</b>	Primary antibodies
<b>Short Description</b>	Goat polyclonal antibody anti-Clathrin-H Chain (50aa to N-Term) is suitable for use in Western Blot and Immunofluorescence research applications.
<b>Applications</b>	WB, IF
<b>Host/Source</b>	Goat
<b>Reactivity</b>	Human, Rat, Mouse, Monkey, Canine

### PRODUCT PROPERTIES

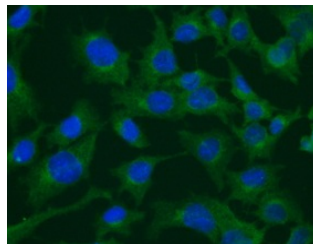
<b>Clonality</b>	Polyclonal
<b>Clone ID</b>	
<b>Concentration</b>	2 mg/mL
<b>Conjugation</b>	Unconjugated
<b>Purification</b>	This antibody is epitope-affinity purified from goat antiserum.
<b>Dilution Range</b>	WB 1:250-1:1000 IF 1:25-1:250
<b>Formulation</b>	PBS, 20% glycerol and 0.05% sodium azide.
<b>Isotype</b>	IgG
<b>Storage Instruction</b>	For continuous use, store at 2-8 C for one-two days. For extended storage, store in -20 C freezer. Working dilution samples should be discarded if not used within 12 hours.

### TARGET INFORMATION

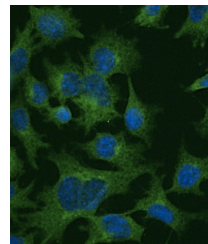
<b>Gene ID</b>	1213
<b>Gene Symbol</b>	CLTC
<b>Uniprot ID</b>	CLH1_HUMAN
<b>Immunogen</b>	Purified recombinant peptide derived from within residues 50 aa to N-terminus of human CLTC produced in E. coli.
<b>Immunogen Region</b>	50aa to N-Term
<b>Specificity</b>	Detects endogenous levels of total CLTC by Western blot in the whole cell lysates (MDCK, At-T20, COS-7).
<b>Immunogen Sequence</b>	



Endogenous CLTC detected with at 1:500 dilution; lysate at 100 µg per lane and rabbit polyclonal to goat IgG (HRP) at 1:10000 dilution



Immunofluorescence - anti-CLTC antibody - Membrane Vesicle Marker in Hepa1-6 cells at 1:50 dilution; cells were fixed with methanol



Immunofluorescence - anti-CLTC antibody - Membrane Vesicle Marker in Hepa1-6 cells at 1:50 dilution; cells were fixed with methanol

This product is suitable for in-vitro studies under the RESEARCH USE ONLY [RUO] licence. This product must not be used as for diagnostic or other medical purposes.  
St John's Laboratory Ltd, Knowledge Dock Business Centre, University Way, London, E16 2RD | Tel: 0208 223 3081