

Anti-MAP2 antibody (1500-1600 aa) (STJ13100511)

STJ13100511

GENERAL INFORMATION

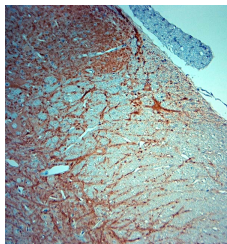
Product Type	Primary antibodies
Short Description	Guinea Pig polyclonal antibody anti-MAP2 (1500-1600 aa) is suitable for use in Immunohistochemistry and Western Blot research applications.
Applications	IHC, WB
Host/Source	Guinea Pig
Reactivity	Rat, Mouse

PRODUCT PROPERTIES

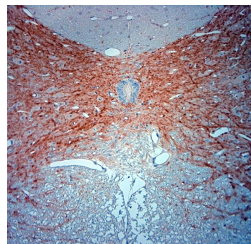
Clonality	Polyclonal
Clone ID	
Concentration	
Conjugation	Unconjugated
Purification	Whole serum
Dilution Range	A dilution of 1 : 500 is recommended. The optimal dilution should be determined by the end user.
Formulation	Shipped as lyophilised. Reconstitute in 100 ul of sterile water. Centrifuge to remove any insoluble material.
Isotype	
Storage	Maintain the lyophilised/reconstituted antibodies frozen at -20°C for long term storage and refrigerated at 2-8°C for a shorter term.
Instruction	When reconstituting, glycerol (1:1) may be added for an additional stability. Avoid freeze and thaw cycles.

TARGET INFORMATION

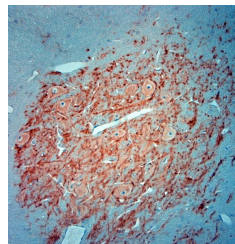
Gene ID	17756
Gene Symbol	Map2
Uniprot ID	MTAP2_MOUSE
Immunogen	A synthetic peptide from aa region 1500-1600 of mouse MAP2 conjugated to blue carrier protein was used as the antigen. The peptide is homologous in rat.
Immunogen Region	1500-1600 aa
Specificity	Specific for MAP2.
Immunogen Sequence	



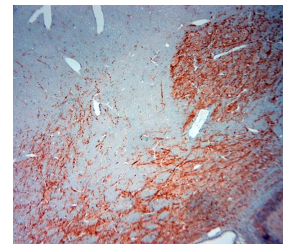
Immunohistochemistry on paraffin sections of rat spinal cord.



Immunohistochemistry on paraffin sections of rat spinal cord.



Immunohistochemistry on paraffin sections of rat hippocampus.



Immunohistochemistry on paraffin sections of rat hippocampus.

This product is suitable for in-vitro studies under the RESEARCH USE ONLY [RUO] licence. This product must not be used as for diagnostic or other medical purposes.
St John's Laboratory Ltd, Knowledge Dock Business Centre, University Way, London, E16 2RD | Tel: 0208 223 3081