

## Anti-NPY antibody (20-60) (STJ13100499)

STJ13100499

### GENERAL INFORMATION

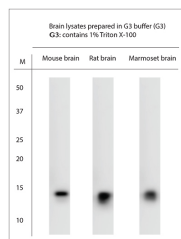
<b>Product Type</b>	Primary antibodies
<b>Short Description</b>	Nz White Rabbit polyclonal antibody anti-NPY (20-60) is suitable for use in Immunohistochemistry and Western Blot research applications.
<b>Applications</b>	IHC, WB
<b>Host/Source</b>	NZ White Rabbit
<b>Reactivity</b>	Human, Mouse, Rat, Marmoset

### PRODUCT PROPERTIES

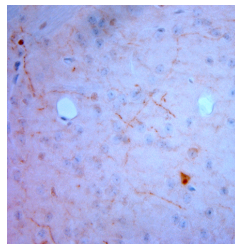
<b>Clonality</b>	Polyclonal
<b>Clone ID</b>	
<b>Concentration</b>	
<b>Conjugation</b>	Unconjugated
<b>Purification</b>	Whole serum
<b>Dilution Range</b>	A dilution of 1: 250 to 1: 1000 is recommended. The optimal dilution should be determined by the end user. Not yet tested in other applications.
<b>Formulation</b>	Shipped as lyophilised. Reconstitute in 100 ul of sterile water. Centrifuge to remove any insoluble material.
<b>Isotype</b>	IgG
<b>Storage</b>	Maintain the lyophilised/reconstituted antibodies frozen at -20°C for long term storage and refrigerated at 2-8°C for a shorter term.
<b>Instruction</b>	When reconstituting, glycerol (1:1) may be added for an additional stability. Avoid freeze and thaw cycles.

### TARGET INFORMATION

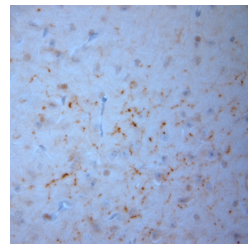
<b>Gene ID</b>	
<b>Gene Symbol</b>	
<b>Uniprot ID</b>	
<b>Immunogen</b>	A synthetic peptide from aa region 20-60 of mouse NPY conjugated to blue carrier protein was used as the antigen. The antigen is homologous in many other species including human, rat, zebrafish and xenopus.
<b>Immunogen Region</b>	20-60
<b>Specificity</b>	Specific for NPY
<b>Immunogen Sequence</b>	



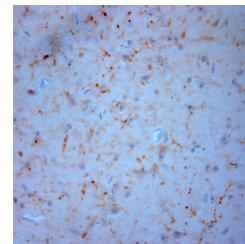
Western blot on tissue lysates. Blocking with 1% LFDMM for 30 min at RT; Primary antibody dilution used at 1:500, incubated overnight at 4C.



Immunohistochemistry on paraffin sections of mouse brain.



Immunohistochemistry on paraffin sections of mouse brain.



Immunohistochemistry on paraffin sections of mouse brain.