

Anti-VGluT1 antibody (2-50) (STJ13100471)

STJ13100471

GENERAL INFORMATION

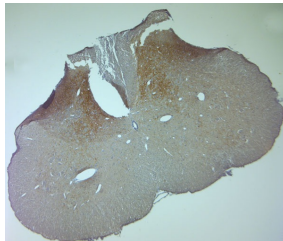
Product Type	Primary antibodies
Short Description	Nz White Rabbit polyclonal antibody anti-VGluT1 (2-50) is suitable for use in Western Blot, Immunohistochemistry, Flow Cytometry, Immunocytochemistry and Immunofluorescence research applications.
Applications	WB, IHC-P, IHC-Fr, FC, ICC, IF
Host/Source	NZ White Rabbit
Reactivity	Human, Rat, Mouse

PRODUCT PROPERTIES

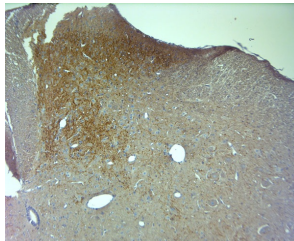
Clonality	Polyclonal
Clone ID	
Concentration	
Conjugation	Unconjugated
Purification	Whole serum
Dilution Range	A dilution of 1:6000 is recommended for WB and 1:2000 for IHC-P. The optimal dilution should be determined by the end user. Not yet tested in other applications.
Formulation	Shipped as lyophilised. Reconstitute in 100 µl of sterile water. Centrifuge to remove any insoluble material.
Isotype	IgG
Storage	Maintain the lyophilised/reconstituted antibodies frozen at -20°C for long term storage and refrigerated at 2-8°C for a shorter term.
Instruction	When reconstituting, glycerol (1:1) may be added for an additional stability. Avoid freeze and thaw cycles.

TARGET INFORMATION

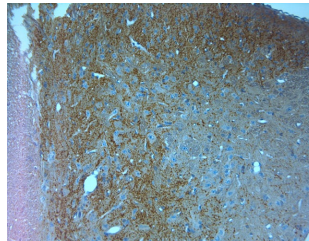
Gene ID	57030
Gene Symbol	SLC17A7
Uniprot ID	VGLU1_HUMAN
Immunogen	A synthetic peptide from aa region 2-50 of human VGluT1 conjugated to blue carrier protein was used as the antigen. The peptide is homologous in rat and mouse.
Immunogen Region	2-50
Specificity	Specific for VGLUT1 (both isoforms 1 and 2).
Immunogen Sequence	



IHC on paraffin sections of rat spinal cord using Rabbit antibody to VGluT1 (2-50) : STJ13100471.HIER: 1 mM EDTA, pH 8 for 20 min using Thermo PT Module.Blocking: 0.2% LFDM in TBST filtered thru 0.2 µm.Detection was done using Novolink HRP polymer from Leica following manufacturer's instructions. Primary antibody dilution 1: 2000, incubated 30 min at RT (using Autostainer) . Sections were counterstained with Harris Hematoxylin.



IHC on paraffin sections of rat spinal cord using Rabbit antibody to VGluT1 (2-50) : STJ13100471.HIER: 1 mM EDTA, pH 8 for 20 min using Thermo PT Module.Blocking: 0.2% LFDM in TBST filtered thru 0.2 µm. Detection was done using Novolink HRP polymer from Leica following manufacturer's instructions. Primary antibody dilution 1: 2000, incubated 30 min at RT (using Autostainer) . Sections were counterstained with Harris Hematoxylin.



IHC on paraffin sections of rat spinal cord using Rabbit antibody to VGluT1 (2-50) : STJ13100471.HIER: 1 mM EDTA, pH 8 for 20 min using Thermo PT Module.Blocking: 0.2% LFDM in TBST filtered thru 0.2 µm. Detection was done using Novolink HRP polymer from Leica following manufacturer's instructions. Primary antibody dilution 1: 2000, incubated 30 min at RT (using Autostainer) . Sections were counterstained with Harris Hematoxylin.



IHC on paraffin sections of rat spinal cord using Rabbit antibody to VGluT1 (2-50) : STJ13100471.HIER: 1 mM EDTA, pH 8 for 20 min using Thermo PT Module.Blocking: 0.2% LFDM in TBST filtered thru 0.2 µm. Detection was done using Novolink HRP polymer from Leica following manufacturer's instructions. Primary antibody dilution 1: 2000, incubated 30 min at RT (using Autostainer) . Sections were counterstained with Harris Hematoxylin.

This product is suitable for in-vitro studies under the RESEARCH USE ONLY [RUO] licence. This product must not be used as for diagnostic or other medical purposes.

St John's Laboratory Ltd, Knowledge Dock Business Centre, University Way, London, E16 2RD | Tel: 0208 223 3081