

Anti-VMAT1 antibody (STJ13100469)

STJ13100469

GENERAL INFORMATION

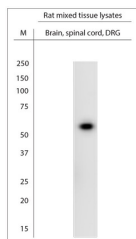
Product Type	Primary antibodies
Short Description	Nz White Rabbit polyclonal antibody anti-VMAT1 is suitable for use in Western Blot and Immunohistochemistry research applications.
Applications	WB, IHC
Host/Source	NZ White Rabbit
Reactivity	Human, Rat, Mouse

PRODUCT PROPERTIES

Clonality	Polyclonal
Clone ID	
Concentration	
Conjugation	Unconjugated
Purification	Whole serum
Dilution Range	A dilution of 1:1000 is recommended. The optimal dilution should be determined by the end user. Not yet tested in other applications.
Formulation	Shipped as lyophilised. Reconstitute in 100 µl of sterile water. Centrifuge to remove any insoluble material.
Isotype	IgG
Storage	Maintain the lyophilised/reconstituted antibodies frozen at -20°C for long term storage and refrigerated at 2-8°C for a shorter term.
Instruction	When reconstituting, glycerol (1:1) may be added for an additional stability. Avoid freeze and thaw cycles.

TARGET INFORMATION

Gene ID	6570
Gene Symbol	SLC18A1
Uniprot ID	VMAT1_HUMAN
Immunogen	A synthetic peptide from human VMAT1 conjugated to blue carrier protein was used as the antigen. The peptides shares about 75% identity with mouse and rat sequences.
Immunogen Region	
Specificity	Specific for VMAT1.
Immunogen Sequence	



WB on rat tissue lysates. Blocking: 1% LFDM for 30 min at RT; primary antibody dilution 1: 1000 incubated at 4C overnight.

This product is suitable for in-vitro studies under the RESEARCH USE ONLY [RUO] licence. This product must not be used as for diagnostic or other medical purposes.
 St John's Laboratory Ltd, Knowledge Dock Business Centre, University Way, London, E16 2RD | Tel: 0208 223 3081