

Anti-VP33B antibody (C-Term) (STJ13100465)

STJ13100465

GENERAL INFORMATION

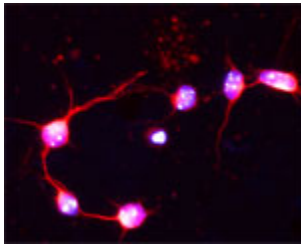
Product Type	Primary antibodies
Short Description	Nz White Rabbit polyclonal antibody anti-VP33B (C-Term) is suitable for use in Immunohistochemistry and Western Blot research applications.
Applications	IHC, WB
Host/Source	NZ White Rabbit
Reactivity	Rat, Mouse

PRODUCT PROPERTIES

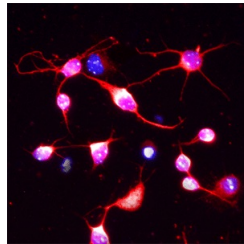
Clonality	Polyclonal
Clone ID	
Concentration	
Conjugation	Unconjugated
Purification	Whole serum
Dilution Range	A dilution of 1:200 to 1:1000 is recommended. The optimal dilution should be determined by the end user. Not yet tested in other applications.
Formulation	Shipped as lyophilised. Reconstitute in 100 µl of sterile water. Centrifuge to remove any insoluble material.
Isotype	IgG
Storage	Maintain the lyophilised/reconstituted antibodies frozen at -20°C for long term storage and refrigerated at 2-8°C for a shorter term.
Instruction	When reconstituting, glycerol (1:1) may be added for an additional stability. Avoid freeze and thaw cycles.

TARGET INFORMATION

Gene ID	64060
Gene Symbol	Vps33b
Uniprot ID	VP33B_RAT
Immunogen	A synthetic peptide from the c-terminal of rat VP33B conjugated to blue carrier protein was used as the antigen. The antigen shares 91% identity with mouse and human sequences.
Immunogen Region	C-Term
Specificity	Specific for VP33B.
Immunogen Sequence	



IF on 1 day- old mouse cortical cell culture using Rabbit antibody to c-terminal of VP33B(STJ13100465) at 1: 500 dilution. DAPI counter stained.



IF on 1 day- old mouse cortical cell culture using Rabbit antibody to c-terminal of VP33B (Vesicle protein sorting associated protein 33B) : whole serum (STJ13100465) at 1: 500 dilution. DAPI counter stained appearing in blue.

This product is suitable for in-vitro studies under the RESEARCH USE ONLY [RUO] licence. This product must not be used as for diagnostic or other medical purposes.
 St John's Laboratory Ltd, Knowledge Dock Business Centre, University Way, London, E16 2RD | Tel: 0208 223 3081