

Anti-VPS26 antibody (Internal) (STJ13100463)

STJ13100463

GENERAL INFORMATION

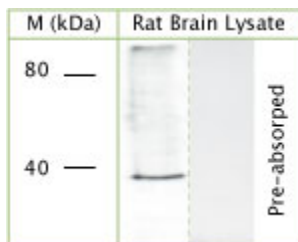
Product Type	Primary antibodies
Short Description	Nz White Rabbit polyclonal antibody anti-VPS26 (Internal) is suitable for use in Immunohistochemistry and Western Blot research applications.
Applications	IHC, WB
Host/Source	NZ White Rabbit
Reactivity	Mouse, Rat, Human

PRODUCT PROPERTIES

Clonality	Polyclonal
Clone ID	
Concentration	
Conjugation	Unconjugated
Purification	Whole serum
Dilution Range	A dilution of 1:300 to 1:2000 is recommended. The optimal dilution should be determined by the end user. Not yet tested in other applications.
Formulation	Shipped as lyophilised. Reconstitute in 100 µl of sterile water. Centrifuge to remove any insoluble material.
Isotype	IgG
Storage	Maintain the lyophilised/reconstituted antibodies frozen at -20°C for long term storage and refrigerated at 2-8°C for a shorter term.
Instruction	When reconstituting, glycerol (1:1) may be added for an additional stability. Avoid freeze and thaw cycles.

TARGET INFORMATION

Gene ID	30930
Gene Symbol	Vps26a
Uniprot ID	VP26A_MOUSE
Immunogen	A synthetic peptide from the internal region of human VPS26 conjugated to an immunogenic carrier protein was used as the antigen. The peptide is homologous in rat and mouse.
Immunogen Region	Internal
Specificity	Specific for VPS26A.
Immunogen Sequence	



WB on rat brain lysate using Rabbit antibody to VPS26 (STJ13100463) at 1:1000 dilution. Pre-absorption of the antibody with the immunising peptide completely abolishes the detected band.