

## Anti-VAMP A/B antibody (50-100) (STJ13100459)

STJ13100459

### GENERAL INFORMATION

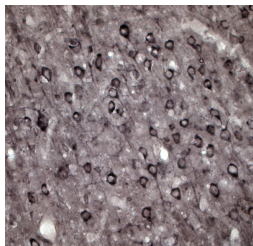
<b>Product Type</b>	Primary antibodies
<b>Short Description</b>	Nz White Rabbit polyclonal antibody anti-VAMP A/B (50-100) is suitable for use in Immunohistochemistry and Western Blot research applications.
<b>Applications</b>	IHC, WB
<b>Host/Source</b>	NZ White Rabbit
<b>Reactivity</b>	Human, Rat, Mouse

### PRODUCT PROPERTIES

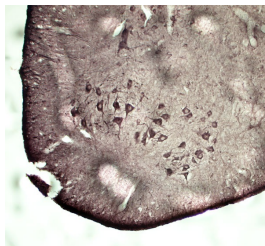
<b>Clonality</b>	Polyclonal
<b>Clone ID</b>	
<b>Concentration</b>	
<b>Conjugation</b>	Unconjugated
<b>Purification</b>	Whole serum
<b>Dilution Range</b>	A dilution of 1:2000 to 1:3000 is recommended for WB and 1:1000 to 1:2000 for IHC-P. The optimal dilution should be determined by the end user. Not yet tested in other applications.
<b>Formulation</b>	Shipped as lyophilised. Reconstitute in 100 µl of sterile water. Centrifuge to remove any insoluble material.
<b>Isotype</b>	IgG
<b>Storage Instruction</b>	Maintain the lyophilised/reconstituted antibodies frozen at -20°C for long term storage and refrigerated at 2-8°C for a shorter term. When reconstituting, glycerol (1:1) may be added for an additional stability. Avoid freeze and thaw cycles.

### TARGET INFORMATION

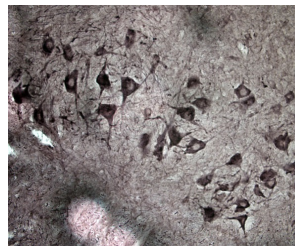
<b>Gene ID</b>	
<b>Gene Symbol</b>	
<b>Uniprot ID</b>	
<b>Immunogen</b>	A synthetic peptide from aa region 50-100 of human VAMPB conjugated to blue carrier protein was used as the antigen. The peptide is homologous in many species including human, rat, mouse, zebra fish, bovine, xenopus and chicken.
<b>Immunogen Region</b>	50-100
<b>Specificity</b>	Specific for VAMP A and B.
<b>Immunogen Sequence</b>	



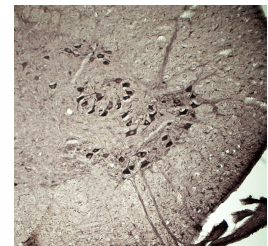
IHC on free floating sections of rat brain. The animal was perfused using Autoperfuser at a pressure of 130 mmHg with 300 ml 4% FA before being processed for OCT embedding. Tissues were cut at 30 µm thickness. Primary antibody dilution 1: 2000, incubated overnight.



IHC on free floating sections of rat spinal cord. The animal was perfused using Autoperfuser at a pressure of 130 mmHg with 300 ml 4% FA before being processed for OCT embedding. Tissues were cut at 30 µm thickness. Primary antibody dilution 1: 2000, incubated overnight.



IHC on free floating sections of rat spinal cord. The animal was perfused using Autoperfuser at a pressure of 130 mmHg with 300 ml 4% FA before being processed for OCT embedding. Tissues were cut at 30 µm thickness. Primary antibody dilution 1: 2000, incubated overnight.



IHC on free floating sections of rat spinal cord. The animal was perfused using Autoperfuser at a pressure of 130 mmHg with 300 ml 4% FA before being processed for OCT embedding. Tissues were cut at 30 µm thickness. Primary antibody dilution 1: 2000, incubated overnight.

This product is suitable for in-vitro studies under the RESEARCH USE ONLY [RUO] licence. This product must not be used as for diagnostic or other medical purposes.  
 St John's Laboratory Ltd, Knowledge Dock Business Centre, University Way, London, E16 2RD | Tel: 0208 223 3081