

## Anti-TUBB5 antibody (C-Term) (STJ13100435)

STJ13100435

### GENERAL INFORMATION

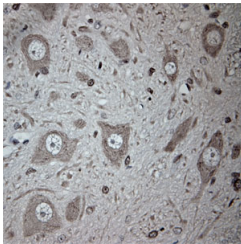
<b>Product Type</b>	Primary antibodies
<b>Short Description</b>	Nz White Rabbit polyclonal antibody anti-Tubulin beta (C-Term) is suitable for use in Immunohistochemistry and Western Blot research applications.
<b>Applications</b>	IHC, WB
<b>Host/Source</b>	NZ White Rabbit
<b>Reactivity</b>	Mouse, Rat, Human, Xenopus, Zebrafish

### PRODUCT PROPERTIES

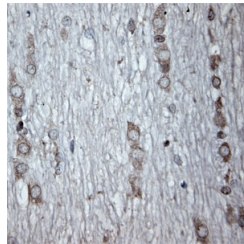
<b>Clonality</b>	Polyclonal
<b>Clone ID</b>	
<b>Concentration</b>	
<b>Conjugation</b>	Unconjugated
<b>Purification</b>	Whole serum
<b>Dilution Range</b>	A concentration of 10-50 µg/ml is recommended. The optimal concentration should be determined by the end user. Not yet tested in other applications.
<b>Formulation</b>	Shipped as lyophilised. Reconstitute in 500 µl of sterile water. Centrifuge to remove any insoluble material.
<b>Isotype</b>	IgG
<b>Storage</b>	Maintain the lyophilised/reconstituted antibodies frozen at -20°C for long term storage and refrigerated at 2-8°C for a shorter term.
<b>Instruction</b>	When reconstituting, glycerol (1:1) may be added for an additional stability. Avoid freeze and thaw cycles.

### TARGET INFORMATION

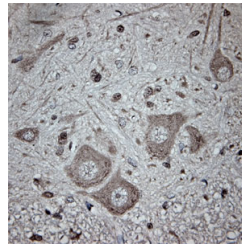
<b>Gene ID</b>	<a href="#">22154</a>
<b>Gene Symbol</b>	<a href="#">Tubb5</a>
<b>Uniprot ID</b>	<a href="#">TBB5_MOUSE</a>
<b>Immunogen</b>	A synthetic peptide from the c-terminal region of human Tubulin beta chain (TUBB5, TUBB2) conjugated to an immunogenic carrier protein was used as the antigen. The peptide is homologous in many other species including rat, mouse, zebrafish and xenopus
<b>Immunogen Region</b>	C-Term
<b>Specificity</b>	Specific for Tubulin beta chain.
<b>Immunogen Sequence</b>	



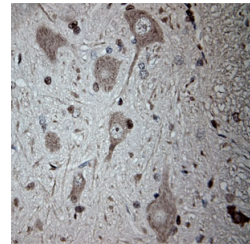
IHC on rat spinal cord (paraffin section) using Rabbit antibody to Rabbit antibody to Tubulin beta (STJ13100435) at a dilution of 30 µg/ml incubated overnight at 4C, developed with DAB/Ni.



IHC on rat spinal cord (paraffin section) using Rabbit antibody to Rabbit antibody to Tubulin beta (STJ13100435) at a dilution of 30 µg/ml incubated overnight at 4C, developed with DAB/Ni.



IHC on rat spinal cord (paraffin section) using Rabbit antibody to Rabbit antibody to Tubulin beta (STJ13100435) at a dilution of 30 µg/ml incubated overnight at 4C, developed with DAB/Ni.



IHC on rat spinal cord (paraffin section) using Rabbit antibody to Rabbit antibody to Tubulin beta (STJ13100435) at a dilution of 30 µg/ml incubated overnight at 4C, developed with DAB/Ni.

This product is suitable for in-vitro studies under the RESEARCH USE ONLY [RUO] licence. This product must not be used as for diagnostic or other medical purposes.  
 St John's Laboratory Ltd, Knowledge Dock Business Centre, University Way, London, E16 2RD | Tel: 0208 223 3081