

Anti-TRPC6 antibody (10-60) (STJ13100423)

STJ13100423

GENERAL INFORMATION

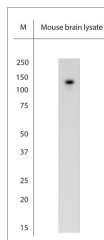
Product Type	Primary antibodies
Short Description	Nz White Rabbit polyclonal antibody anti-TRPC6 (10-60) is suitable for use in Western Blot research applications.
Applications	WB
Host/Source	NZ White Rabbit
Reactivity	Mouse, Rat

PRODUCT PROPERTIES

Clonality	Polyclonal
Clone ID	
Concentration	
Conjugation	Unconjugated
Purification	IgG
Dilution Range	A concentration of 3-10 µg/ml is recommended. The optimal concentration should be determined by the end user. Not yet tested in other applications.
Formulation	Shipped as lyophilised. Reconstitute in 500 µl of sterile water. Centrifuge to remove any insoluble material.
Isotype	IgG
Storage	Maintain the lyophilised/reconstituted antibodies frozen at -20°C for long term storage and refrigerated at 2-8°C for a shorter term.
Instruction	When reconstituting, glycerol (1:1) may be added for an additional stability. Avoid freeze and thaw cycles.

TARGET INFORMATION

Gene ID	22068
Gene Symbol	Trpc6
Uniprot ID	TRPC6_MOUSE
Immunogen	A synthetic peptide from taa region 10-60 of rat TRPC6 conjugated to blue carrier protein was used as the antigen. The antigen is homologous with the corresponding sequence in mouse.
Immunogen Region	10-60
Specificity	Specific for TRPC6.
Immunogen Sequence	



WB on mouse brain lysate. Blocking: 1% LFDM for 30 min at RT; primary antibody dilution 5 µg/ml incubated at 4°C overnight.