

Anti-TRPC3 antibody (STJ13100411)

STJ13100411

GENERAL INFORMATION

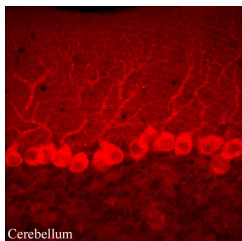
Product Type	Primary antibodies
Short Description	Nz White Rabbit polyclonal antibody anti-TRPC3 is suitable for use in Immunohistochemistry and Western Blot research applications.
Applications	IHC, WB
Host/Source	NZ White Rabbit
Reactivity	Rat, Mouse, Human, Marmoset

PRODUCT PROPERTIES

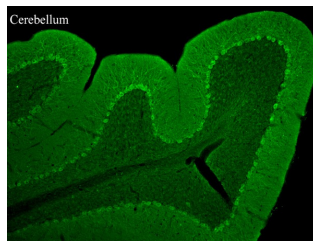
Clonality	Polyclonal
Clone ID	
Concentration	
Conjugation	Unconjugated
Purification	Whole serum
Dilution Range	A dilution of 1:1000 is recommended for WB and 1:500 for IF. The optimal dilution should be determined by the end user.
Formulation	Shipped as lyophilised. Reconstitute in 100 µl of sterile water. Centrifuge to remove any insoluble material.
Isotype	IgG
Storage	Maintain the lyophilised/reconstituted antibodies frozen at -20°C for long term storage and refrigerated at 2-8°C for a shorter term.
Instruction	When reconstituting, glycerol (1:1) may be added for an additional stability. Avoid freeze and thaw cycles.

TARGET INFORMATION

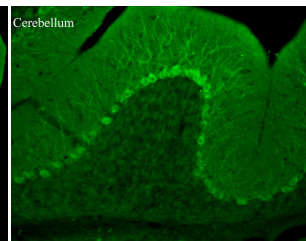
Gene ID	7222
Gene Symbol	TRPC3
Uniprot ID	TRPC3_HUMAN
Immunogen	A synthetic peptide from rat TRPC3 conjugated to blue carrier protein was used as the antigen. The peptide is homologous in mouse and human.
Immunogen Region	
Specificity	Specific for TRPC3.
Immunogen Sequence	



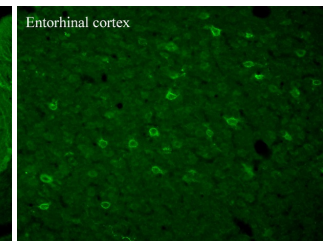
IF on frozen sections of mouse brain. Primary antibody dilution 1:50



IF on frozen sections of mouse brain. Primary antibody dilution 1:500.



IF on frozen sections of mouse brain. Primary antibody dilution 1:50



IF on frozen sections of mouse brain. Primary antibody dilution 1:50

This product is suitable for in-vitro studies under the RESEARCH USE ONLY [RUO] licence. This product must not be used as for diagnostic or other medical purposes.
 St John's Laboratory Ltd, Knowledge Dock Business Centre, University Way, London, E16 2RD | Tel: 0208 223 3081