

Anti-TRPC6 antibody (10-60) (STJ13100410)

STJ13100410

GENERAL INFORMATION

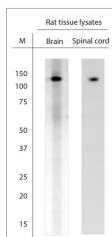
Product Type	Primary antibodies
Short Description	Nz White Rabbit polyclonal antibody anti-TRPC6 (10-60) is suitable for use in Western Blot research applications.
Applications	WB
Host/Source	NZ White Rabbit
Reactivity	Mouse, Rat, Human, Marmoset

PRODUCT PROPERTIES

Clonality	Polyclonal
Clone ID	
Concentration	
Conjugation	Unconjugated
Purification	Whole serum
Dilution Range	A dilution of 1:4000 is recommended. The optimal dilution should be determined by the end user. Not yet tested in other applications.
Formulation	Shipped as lyophilised. Reconstitute in 100 µl of sterile water. Centrifuge to remove any insoluble material.
Isotype	IgG
Storage	Maintain the lyophilised/reconstituted antibodies frozen at -20°C for long term storage and refrigerated at 2-8°C for a shorter term.
Instruction	When reconstituting, glycerol (1:1) may be added for an additional stability. Avoid freeze and thaw cycles.

TARGET INFORMATION

Gene ID	7225
Gene Symbol	TRPC6
Uniprot ID	TRPC6_HUMAN
Immunogen	A synthetic peptide from aa region 10-60 of rat TRPC6 conjugated to blue carrier protein was used as the antigen. The antigen is homologous with the corresponding sequence in mouse.
Immunogen Region	10-60
Specificity	Specific for TRPC6.
Immunogen Sequence	



WB on rat tissue lysates. Blocking: 1% LFDM for 30 min at RT; primary antibody dilution 1: 4000 incubated at 4C overnight.