

Anti-TIAM1 antibody (STJ13100389)

STJ13100389

GENERAL INFORMATION

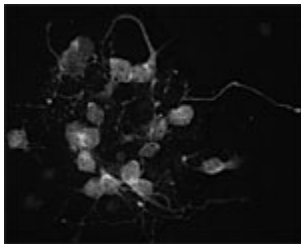
Product Type	Primary antibodies
Short Description	Nz White Rabbit polyclonal antibody anti-TIAM 1 is suitable for use in Immunohistochemistry research applications.
Applications	IHC
Host/Source	NZ White Rabbit
Reactivity	Human, Mouse

PRODUCT PROPERTIES

Clonality	Polyclonal
Clone ID	
Concentration	
Conjugation	Unconjugated
Purification	Whole serum
Dilution Range	Dilution of 1:300 to 1:2000 is recommended. The optimal dilution should be determined by the end user.
Formulation	Shipped as lyophilised. Reconstitute in 100 µl of sterile water. Centrifuge to remove any insoluble material.
Isotype	IgG
Storage	Maintain the lyophilised/reconstituted antibodies frozen at -20°C for long term storage and refrigerated at 2-8°C for a shorter term.
Instruction	When reconstituting, glycerol (1:1) may be added for an additional stability. Avoid freeze and thaw cycles.

TARGET INFORMATION

Gene ID	7074
Gene Symbol	TIAM1
Uniprot ID	TIAM1_HUMAN
Immunogen	A synthetic peptide from human TIAM1 conjugated to blue carrier protein was used as the antigen. The peptide is homologous in mouse.
Immunogen Region	
Specificity	Specific for TIAM1.
Immunogen Sequence	



IF on 1 day- old mouse cortical cell culture using Rabbit antibody to TIAM 1 (STJ13100389) at 1: 2000 dilution. DAPI counter stained.