

Anti-TRPA1 antibody (STJ13100387)

STJ13100387

GENERAL INFORMATION

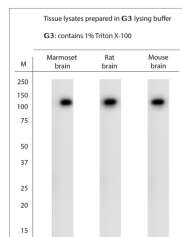
Product Type	Primary antibodies
Short Description	Nz White Rabbit polyclonal antibody anti-TRPA1 is suitable for use in Immunohistochemistry and Western Blot research applications.
Applications	IHC, WB
Host/Source	NZ White Rabbit
Reactivity	Rat, Mouse, Human, Marmoset

PRODUCT PROPERTIES

Clonality	Polyclonal
Clone ID	
Concentration	
Conjugation	Unconjugated
Purification	Whole serum
Dilution Range	A dilution of 1:6000 is recommended for WB and 1:2000 for IHC-P. The optimal dilution should be determined by the end user. Not yet tested in other applications. For WB, tissue lysates should be prepared in G3 lysing buffer (G3 lysing buffer contains
Formulation	Shipped as lyophilised. Reconstitute in 100 µl of sterile water. Centrifuge to remove any insoluble material.
Isotype	IgG
Storage Instruction	Maintain the lyophilised/reconstituted antibodies frozen at -20°C for long term storage and refrigerated at 2-8°C for a shorter term. When reconstituting, glycerol (1:1) may be added for an additional stability. Avoid freeze and thaw cycles.

TARGET INFORMATION

Gene ID	277328
Gene Symbol	Trpa1
Uniprot ID	TRPA1_MOUSE
Immunogen	A synthetic peptide from rat TRPA1 conjugated to blue carrier protein was used as the antigen. The peptide is homologous in mouse.
Immunogen Region	
Specificity	Specific for TRPA1.
Immunogen Sequence	



WB on tissue lysates. Blocking: 1% LFDM for 30 min at RT; primary antibody dilution 1: 1000 incubated overnight at 4°C.

This product is suitable for in-vitro studies under the RESEARCH USE ONLY [RUO] licence. This product must not be used as for diagnostic or other medical purposes.
 St John's Laboratory Ltd, Knowledge Dock Business Centre, University Way, London, E16 2RD | Tel: 0208 223 3081