

Anti-SRRT antibody (STJ13100380)

STJ13100380

GENERAL INFORMATION

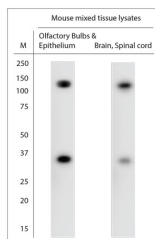
Product Type	Primary antibodies
Short Description	Nz White Rabbit polyclonal antibody anti-ARS2 is suitable for use in Immunohistochemistry and Western Blot research applications.
Applications	IHC, WB
Host/Source	NZ White Rabbit
Reactivity	Human, Mouse

PRODUCT PROPERTIES

Clonality	Polyclonal
Clone ID	
Concentration	
Conjugation	Unconjugated
Purification	Whole serum
Dilution Range	A dilution of 1:1000 is recommended. The optimal dilution should be determined by the end user. Not yet tested in other applications.
Formulation	Shipped as lyophilised. Reconstitute in 100 µl of sterile water. Centrifuge to remove any insoluble material.
Isotype	IgG
Storage	Maintain the lyophilised/reconstituted antibodies frozen at -20°C for long term storage and refrigerated at 2-8°C for a shorter term.
Instruction	When reconstituting, glycerol (1:1) may be added for an additional stability. Avoid freeze and thaw cycles.

TARGET INFORMATION

Gene ID	51593
Gene Symbol	SRRT
Uniprot ID	SRRT_HUMAN
Immunogen	A synthetic peptide from human ARS2 conjugated to blue carrier protein was used as the antigen. The peptide is homologous in mouse.
Immunogen Region	
Specificity	Specific for ARS2.
Immunogen Sequence	



WB on mouse tissue lysate. Blocking: 1% LFDMM for 30 min at RT; primary antibody dilution 1: 1000 incubated at 4C overnight.