

## Anti-SYCP1 antibody (STJ13100379)

STJ13100379

### GENERAL INFORMATION

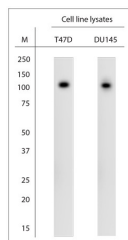
<b>Product Type</b>	Primary antibodies
<b>Short Description</b>	Nz White Rabbit polyclonal antibody anti-SCP1 is suitable for use in Immunohistochemistry and Western Blot research applications.
<b>Applications</b>	IHC, WB
<b>Host/Source</b>	NZ White Rabbit
<b>Reactivity</b>	Human

### PRODUCT PROPERTIES

<b>Clonality</b>	Polyclonal
<b>Clone ID</b>	
<b>Concentration</b>	
<b>Conjugation</b>	Unconjugated
<b>Purification</b>	Whole serum
<b>Dilution Range</b>	A dilution of 1:1000 is recommended. The optimal dilution should be determined by the end user. Not yet tested in other applications.
<b>Formulation</b>	Shipped as lyophilised. Reconstitute in 100 µl of sterile water. Centrifuge to remove any insoluble material.
<b>Isotype</b>	IgG
<b>Storage</b>	Maintain the lyophilised/reconstituted antibodies frozen at -20°C for long term storage and refrigerated at 2-8°C for a shorter term.
<b>Instruction</b>	When reconstituting, glycerol (1:1) may be added for an additional stability. Avoid freeze and thaw cycles.

### TARGET INFORMATION

<b>Gene ID</b>	6847
<b>Gene Symbol</b>	SYCP1
<b>Uniprot ID</b>	SYCP1_HUMAN
<b>Immunogen</b>	A synthetic peptide from human SCP1 conjugated to blue carrier protein was used as the antigen.
<b>Region</b>	
<b>Specificity</b>	Specific for SCP1.
<b>Immunogen Sequence</b>	



WB on cell line lysates. Blocking: 1% LFDM for 30 min at RT; primary antibody dilution 1: 1000 incubated at 4°C overnight.

This product is suitable for in-vitro studies under the RESEARCH USE ONLY [RUO] licence. This product must not be used as for diagnostic or other medical purposes.  
 St John's Laboratory Ltd, Knowledge Dock Business Centre, University Way, London, E16 2RD | Tel: 0208 223 3081