

Anti-SCAMP1 antibody (2-50) (STJ13100375)

STJ13100375

GENERAL INFORMATION

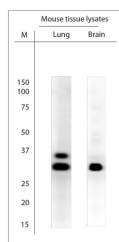
Product Type	Primary antibodies
Short Description	Nz White Rabbit polyclonal antibody anti-SCAMP1 (2-50) is suitable for use in Immunohistochemistry and Western Blot research applications.
Applications	IHC, WB
Host/Source	NZ White Rabbit
Reactivity	Mouse, Rat, Human

PRODUCT PROPERTIES

Clonality	Polyclonal
Clone ID	
Concentration	
Conjugation	Unconjugated
Purification	Whole serum
Dilution Range	A dilution of 1:300 to 1:2000 is recommended. The optimal dilution should be determined by the end user. Not tested in other applications.
Formulation	Shipped as lyophilised. Reconstitute in 100 µl of sterile water. Centrifuge to remove any insoluble material.
Isotype	IgG
Storage	Maintain the lyophilised/reconstituted antibodies frozen at -20°C for long term storage and refrigerated at 2-8°C for a shorter term.
Instruction	When reconstituting, glycerol (1:1) may be added for an additional stability. Avoid freeze and thaw cycles.

TARGET INFORMATION

Gene ID	9522
Gene Symbol	SCAMP1
Uniprot ID	SCAM1_HUMAN
Immunogen	A synthetic peptide from aa region 2-50 of rat SCAMP1 conjugated to blue carrier protein was used as the antigen. The peptide is homologous in mouse and human.
Immunogen Region	2-50
Specificity	Specific for SCAMP1.
Immunogen Sequence	



WB on mouse tissue lysates. Blocking with 0.5% LFDM for 30 min at RT. Primary antibody used at 1: 5000 dilution incubated overnight at 4°C.