

Anti-SEPTIN2 antibody (C-Term) (STJ13100357)

STJ13100357

GENERAL INFORMATION

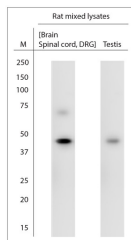
Product Type	Primary antibodies
Short Description	Nz White Rabbit polyclonal antibody anti-Septin 2 (C-Term) is suitable for use in Immunohistochemistry and Western Blot research applications.
Applications	IHC, WB
Host/Source	NZ White Rabbit
Reactivity	Human, Rat, Mouse

PRODUCT PROPERTIES

Clonality	Polyclonal
Clone ID	
Concentration	
Conjugation	Unconjugated
Purification	Whole serum
Dilution Range	A dilution of 1:1000 is recommended. The optimal dilution should be determined by the end user. Not yet tested in other applications.
Formulation	Shipped as lyophilised. Reconstitute in 100 µl of sterile water. Centrifuge to remove any insoluble material.
Isotype	IgG
Storage	Maintain the lyophilised/reconstituted antibodies frozen at -20°C for long term storage and refrigerated at 2-8°C for a shorter term.
Instruction	When reconstituting, glycerol (1:1) may be added for an additional stability. Avoid freeze and thaw cycles.

TARGET INFORMATION

Gene ID	4735
Gene Symbol	SEPTIN2
Uniprot ID	SEPT2_HUMAN
Immunogen	A synthetic peptide from the c-terminal region of human Septin 2 conjugated to blue carrier protein was used as the antigen. The peptide is homologous in rat and mouse.
Immunogen Region	C-Term
Specificity	Specific for SEPT2.
Immunogen Sequence	



WB on rat tissue lysate. Blocking: 1% LFDm for 30 min at RT; primary antibody dilution 1: 1000 incubated at 4C overnight.