

Anti-SYN1 antibody (595-645) (STJ13100349)

STJ13100349

GENERAL INFORMATION

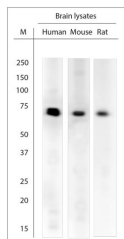
Product Type	Primary antibodies
Short Description	Nz White Rabbit polyclonal antibody anti-Synapsin 1 (595-645) is suitable for use in Immunohistochemistry and Western Blot research applications.
Applications	IHC, WB
Host/Source	NZ White Rabbit
Reactivity	Human, Rat, Mouse

PRODUCT PROPERTIES

Clonality	Polyclonal
Clone ID	
Concentration	
Conjugation	Unconjugated
Purification	Whole serum
Dilution Range	A dilution of 1:2000 to 1:4000 is recommended. The optimal dilution should be determined by the end user. Not yet tested in other applications.
Formulation	Shipped as lyophilised. Reconstitute in 100 µl of sterile water. Centrifuge to remove any insoluble material.
Isotype	IgG
Storage	Maintain the lyophilised/reconstituted antibodies frozen at -20°C for long term storage and refrigerated at 2-8°C for a shorter term.
Instruction	When reconstituting, glycerol (1:1) may be added for an additional stability. Avoid freeze and thaw cycles.

TARGET INFORMATION

Gene ID	6853
Gene Symbol	SYN1
Uniprot ID	SYN1_HUMAN
Immunogen	A synthetic peptide from aa region 595-645 of human Synapsin 1 conjugated to blue carrier protein was used as the antigen.
Immunogen Region	595-645
Specificity	Specific for Synapsin-1.
Immunogen Sequence	



WB on brain lysates. Blocking with 1% LFDM for 30 min at RT. Primary antibody used at 1:3000 dilution incubated overnight at 4°C.

This product is suitable for in-vitro studies under the RESEARCH USE ONLY [RUO] licence. This product must not be used as for diagnostic or other medical purposes.
 St John's Laboratory Ltd, Knowledge Dock Business Centre, University Way, London, E16 2RD | Tel: 0208 223 3081