

## Anti-Syntaxin2 antibody (STJ13100344)

STJ13100344

### GENERAL INFORMATION

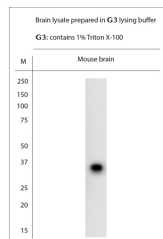
<b>Product Type</b>	Primary antibodies
<b>Short Description</b>	Nz White Rabbit polyclonal antibody anti-Syntaxin2 is suitable for use in Immunohistochemistry and Western Blot research applications.
<b>Applications</b>	IHC, WB
<b>Host/Source</b>	NZ White Rabbit
<b>Reactivity</b>	Rat, Mouse

### PRODUCT PROPERTIES

<b>Clonality</b>	Polyclonal
<b>Clone ID</b>	
<b>Concentration</b>	
<b>Conjugation</b>	Unconjugated
<b>Purification</b>	Whole serum
<b>Dilution Range</b>	A dilution of 1:1000 to 1:1500 is recommended. The optimal dilution should be determined by the end user. Not yet tested in other applications.
<b>Formulation</b>	Shipped as lyophilised. Reconstitute in 100 µl of sterile water. Centrifuge to remove any insoluble material.
<b>Isotype</b>	IgG
<b>Storage</b>	Maintain the lyophilised/reconstituted antibodies frozen at -20°C for long term storage and refrigerated at 2-8°C for a shorter term.
<b>Instruction</b>	When reconstituting, glycerol (1:1) may be added for an additional stability. Avoid freeze and thaw cycles.

### TARGET INFORMATION

<b>Gene ID</b>	<a href="#">NA</a>
<b>Gene Symbol</b>	<a href="#">Stx2</a>
<b>Uniprot ID</b>	<a href="#">STX2_MOUSE</a>
<b>Immunogen</b>	A synthetic peptide from mouse Syntaxin2 conjugated to blue carrier protein was used as the antigen.
<b>Immunogen Region</b>	
<b>Specificity</b>	Specific for Syntaxin2.
<b>Immunogen Sequence</b>	



WB on brain lysate. Blocking: 1% LFDm for 30 min at RT; primary antibody dilution 1: 1500 incubated at 4C overnight.