

## Anti-STAM antibody (STJ13100332)

STJ13100332

### GENERAL INFORMATION

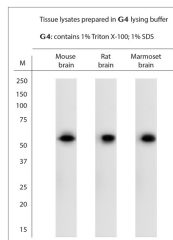
|                          |   |
|--------------------------|---|
| <b>Product Type</b>      | Primary antibodies  |
| <b>Short Description</b> | Nz White Rabbit polyclonal antibody anti-STAM1, 2 is suitable for use in Immunohistochemistry and Western Blot research applications. |
| <b>Applications</b>      | IHC, WB   |
| <b>Host/Source</b>       | NZ White Rabbit   |
| <b>Reactivity</b>        | Human, Rat, Mouse, Marmoset   |

### PRODUCT PROPERTIES

|                            |   |
|----------------------------|---|
| <b>Clonality</b>           | Polyclonal  |
| <b>Clone ID</b>            |   |
| <b>Concentration</b>       |   |
| <b>Conjugation</b>         | Unconjugated  |
| <b>Purification</b>        | Whole serum   |
| <b>Dilution Range</b>      | A dilution of 1:5000 is recommended. The optimal dilution should be determined by the end user.   |
| <b>Formulation</b>         | Shipped as lyophilised. Reconstitute in 100 µl of sterile water. Centrifuge to remove any insoluble material.   |
| <b>Isotype</b>             | IgG   |
| <b>Storage Instruction</b> | Maintain the lyophilised/reconstituted antibodies frozen at -20°C for long term storage and refrigerated at 2-8°C for a shorter term. When reconstituting, glycerol (1:1) may be added for an additional stability. Avoid freeze and thaw cycles. |

### TARGET INFORMATION

|                           |   |
|---------------------------|---|
| <b>Gene ID</b>            | 8027  |
| <b>Gene Symbol</b>        | STAM  |
| <b>Uniprot ID</b>         | STAM1_HUMAN   |
| <b>Immunogen</b>          | A synthetic peptide from human STAM 1, 2 (STAM-1, STAM-2) conjugated to blue carrier protein was used as the antigen. The peptide is homologous in many species including rat, mouse, zebra fish and xenopus. |
| <b>Immunogen Region</b>   |   |
| <b>Specificity</b>        | Specific for STAM1 & 2.   |
| <b>Immunogen Sequence</b> |   |



WB on brain tissue lysates. Blocking: 1% LFDM for 30 min at RT; primary antibody dilution 1:4000 incubated at 4C overnight.